

# CHANGES IN ELECTRICITY RATES

[Learn more on pages 4-5](#)

**PKM ELECTRIC COOPERATIVE SUMMER HOURS**

JUNE THROUGH AUGUST | 7:00 A.M. – 5:30 P.M. | MONDAY-THURSDAY (CLOSED FRIDAY)



# CEO Report

**JEFF RUSTAD**  
CEO  
PKM Electric Co-op

I want to thank all the members that showed up to their annual meeting this year. One hundred members attended and just over 200 meals were served by Lee's Catering. Thank you to Warren-Alvarado-Oslo High School for allowing us to use their newly remodeled auditorium. I would also like to thank Dan Inman, Minnkota Power Cooperative's Vice President of Power Delivery and Chief Information and Technology Officer, who presented members with Minnkota updates about future power supply, power market volatility, rising rates, safety performance (their best recorded), outage performance, generation performance and cybersecurity performance. Also in attendance from Minnkota was Vice President of External Affairs Stacey Dahl and our Minnkota Legal Counsel Adam Bothun. We also welcomed special guests Peter Mosbeck, board chair for Red Lake Electric Cooperative, and Rick Bye and Fred Nicholls, both retired PKM employees. PKM directors Tom Woinarowicz, Mark Hatton and Paul Aakre were elected for another three-year term. Tom is also our Minnkota board representative, serving as vice chair. Paul is our Square Butte board representative, serving as president. Congratulations to our prize winners, whose names are printed in this issue. As always, it was great to see everyone and get a chance to visit.

## New electric rates in this issue

Minnkota's 8.3% rate increase impacted our April billing, and PKM has absorbed this increase for April and May. We completed a rate study with Power Systems Engineering, and they presented to the board on May 20 to set new rates. There were good questions and discussion. Your PKM board voted to set the new residential kWh (energy) rate at 14 cents. The current rate was 12.6 cents with a 4-mil wind surcharge (13 cents). You will see the new rates on July 1 for June billing. I would like to say we won't see any more increases for a few years. We've been informed to expect some kind of adjustment from Minnkota in 2027, though there are many variables that can change that timeline.

You will find the new rate schedule for all classes in this month's newsletter.

## Lineworker Appreciation Day

Lineworker Appreciation Day was April 18, so if you see them out and about, please thank them for all they do to keep the lights on 24/7, 365 days a year.

## Administrative Professionals Day

Administrative Professionals Day was April 23 this year. Each day seems to bring different challenges. I want to thank them for all they do in making sure everything goes smoothly.

## Electrical Safety Month

May was Electric Safety Month – please be aware when you are working around poles, wires and ground transformers. We have had a few of them hit already this year. Also, make sure kids know how to stay safe around electricity when they're outside. You can find more about this at [safeelectricity.org](http://safeelectricity.org). And of course, call 811 if you are doing any excavation, ditching or tree planting. Cooperative Development will be the vendor locating the PKM underground utilities again this year.

Safety has always been a priority at PKM, and our insurance provider and Safe Electricity have collaborated on an electric safety sticker for farm equipment. We have a preview of the design in this issue and will be working on getting those out to our local farms. PKM Electric Cooperative also engages with our local schools and fire departments, doing high voltage safety demonstrations. If you think you have a

group that would benefit from one of these demonstrations, please give us a call.

## Voices for Cooperative Power

If you want to be involved in grassroots efforts to help shape the energy policy that keeps the lights on, I recommend joining Voices for Cooperative Power. It helps protect your co-op's interests and advocates for smart energy policy. As I write this, the Minnesota Legislative Session is wrapping up. The cooperatives pushed for net metering reform, lifting the nuclear moratorium in Minnesota and property tax clarification. The chances of any of these moving forward are slim.

## Construction season starting

Crews have been busy working on equipment and installing electronic distribution breakers. They have also been retiring overhead lines that had been converted to underground last year. Frost has created some issues pulling poles. We are preparing for a busy year, and the underground cable ordered for this year is just starting to show up. The final price on this is not set until the day it ships out to us, depending on current commodity prices. We had been waiting on frost to start plowing cable.

## HVAC maintenance

Just a reminder to anyone who has heat pumps or regular central air – make sure you inspect your air filter and outdoor condenser and clean the coils if needed.

As always, if you have questions please call or stop by the office.

### May/June 2025 (Vol. 79, No. 3)

The PKM News (USPS 417060) is published six times a year: February, April, June, August, October and December, by PKM Electric Cooperative, Inc., 406 N. Minnesota St., Warren, MN 56762. Periodicals postage paid at Warren, MN. Subscription 25¢/year for members, \$2.50/year for non-members. POSTMASTER: Send address changes to PKM Electric Cooperative, Inc., P.O. Box 108, Warren, MN 56762-0108.

#### Office hours

8 a.m. to 5:30 p.m., Monday through Thursday  
218-745-4711 or 800-552-7366

#### Electrical after-hours emergencies

800-552-7366  
e-mail: [info@pkmcoop.com](mailto:info@pkmcoop.com)  
website: [www.pkmcoop.com](http://www.pkmcoop.com)

#### Next board meeting

Board meeting to be held the last Tuesday of the month.

#### Officers and Directors

President ..... Mark Hatton  
Vice President ..... C.J. Peterson  
Secretary-Treasurer..... Wayne Malm  
Directors ..... Paul Aakre, Jerred Copp, Steve Goodwin,  
Chris Mortenson, Blake Owens, and Tom Woinarowicz  
CEO ..... Jeff Rustad  
Editors ..... Danny Schmidt, Megan Dagoberg

*This institution is an equal opportunity provider and employer.*



# HELP KEEP ENERGY RELIABLE AND AFFORDABLE IN MINNESOTA

As a local energy cooperative, PKM Electric Cooperative works daily to provide reliable, affordable power to the communities and member-owners we serve. We have a long history of coming together to turn on the lights for rural energy consumers. Over the years, we have adapted our business practices to continue providing reliable, affordable energy even though the industry continues to change at a rapid pace. **But we need your help!**

PKM is just one of 50 electric cooperatives that serve rural energy consumers in Minnesota. We have partnered with other Minnesota cooperatives through our statewide organization, Minnesota Rural Electric Association (MREA), and our national organization, National Rural Electric Cooperative Association (NRECA), to ensure we have a voice at the table and make our cooperative voices heard when it comes to energy policy in Minnesota.

Help us advocate for reliable, affordable energy for all of Minnesota's energy consumers by signing up for Voices for Cooperative Power (VCP), a network of electric cooperative member-consumers who are working together to ensure the needs of rural America are reflected in state and national policy decisions. VCP is a grassroots network of over 1.1 million advocates who help shape energy policy that keeps the lights on. By getting involved in VCP, co-op member-consumers carry their voices to Washington, D.C., and beyond to help educate policymakers on the important role their co-op plays in providing safe, reliable, affordable power.

**You can learn more and sign up at <https://voicesforcooperativepower.com/minnesota>**

*VCP is a free service available for electric cooperatives through NRECA. Through the VCP platform, you will also be exposed to policy issues impacting energy cooperatives at a national level. NRECA maintains the service and sets the national priorities for VCP. Joining VCP is an individual decision and completely optional. You will not be enrolled automatically as a member of PKM Electric nor will you be required to contact your legislators by signing up for the service. Those who register can withdraw their registration at any time through VCP.*



## YOUR COOPERATIVE'S LEGISLATORS



### FEDERAL LEGISLATORS

**President Donald Trump**  
The White House  
1600 Pennsylvania Ave. NW  
Washington, D.C. 20500  
[www.whitehouse.gov](http://www.whitehouse.gov)  
202-456-1111

**Senator Tina Smith**  
720 Hart Senate Office Bldg.  
Washington, D.C. 20510  
[www.smith.senate.gov](http://www.smith.senate.gov)  
202-224-5641

**Senator Amy Klobuchar**  
425 Dirksen Senate Bldg.  
Washington, D.C. 20510

[www.klobuchar.senate.gov](http://www.klobuchar.senate.gov)  
202-224-3244  
1-888-224-9043 (Minnesota office)  
Fax: 202-228-2186

**Congresswoman Michelle Fischbach, U.S. House**  
1237 Longworth House Office Bldg.  
Washington, D.C. 20515  
[www.fischbach.house.gov](http://www.fischbach.house.gov)  
202-225-2165  
Fax: 202-225-1593

### MINNESOTA STATE LEGISLATORS

**Governor Tim Walz**  
Capitol Bldg., Room 130

75 Rev. Dr. Martin Luther King, Jr. Boulevard  
St. Paul, MN 55155  
800-657-3717  
[www.mn.gov/governor](http://www.mn.gov/governor)

**Senator Mark Johnson**  
95 University Avenue W.  
Minnesota Senate Bldg., Room 3111  
St. Paul, MN 55155  
651-296-5782  
[sen.mark.johnson@senate.mn](mailto:sen.mark.johnson@senate.mn)  
[www.senate.mn/members](http://www.senate.mn/members)

**Representative John Burkel**  
309 State Office Bldg.  
St. Paul, MN 55155

651-296-9635  
[rep.john.burkel@house.mn](mailto:rep.john.burkel@house.mn)

**Representative Steve Gander**  
Centennial Office Bldg. (Second Floor)  
St. Paul, MN 55155  
651-296-5091  
[rep.steve.gander@house.mn](mailto:rep.steve.gander@house.mn)



**Scan to learn more about VCP and how you can help.**

# 2025 RATE SCHEDULE INCREASE DETAILS

**AFFECTING ENERGY USED AS OF JUNE 1, 2025, AND FORWARD**

The new rates below will be applied to your June usage, which includes changes to the kWh rate on all rate classes and a few changes to the capacity and fixed charges on the three-phase accounts. The last kWh rate change for PKM was on Jan. 1, 2016, to 12.6 cents, and previous changes were on Jan. 1, 2013, to 11.6 cents and on March 1, 2010, to 8.6 cents.

CLASS	RATE COMPONENT	RATES	
		CURRENT	AS OF JUNE 1
Rural/Residential	kWh Charge	12.6¢	14.0¢
	Wind Energy Surcharge	0.4¢	0.0¢
Off-Peak	OP1 – Winter Slab Storage Off-Peak (Oct. 1-April 30)	5.4¢	6.2¢
	OP1 – Summer Slab Storage Off-Peak (May 1-Sept. 30)	5.4¢	7.0¢
	OP2 – Winter Dual Heat Off-Peak (Oct. 1-April 30)	5.4¢	6.2¢
	OP2 – Summer Dual Heat Off-Peak (May 1-Sept. 30)	5.4¢	7.0¢
	OP3 – Winter Short-Term Off-Peak (Oct. 1-April 30)	6.9¢	7.7¢
	OP3 – Summer Short-Term Off-Peak (May 1-Sept. 30)	6.9¢	8.5¢
MN DNR, Railroad and Tile Pump	<b>FIXED CHARGE</b>	<b>CURRENT</b>	<b>AS OF JUNE 1</b>
	7.5 kVa or less		\$60.00
	10 kVa		\$60.00
	15 kVa		\$60.00
	25 kVa		\$60.00
	37.5 kVa		\$60.00
	50 kVa		\$60.00
	75 kVa		\$100.00
	100 kVa		\$120.00
	kWh Charge	12.6¢	14.0¢
	Wind Energy Surcharge	0.4¢	0.0¢
Security Lights	Metered	\$5.00	\$5.60
	Unmetered	\$8.00	\$9.00

CLASS	FIXED CHARGE	CURRENT	AS OF JUNE 1
Small Commercial	75 kVa OVER	\$60.00	\$100.00
	CAPACITY CHARGE	CURRENT	AS OF JUNE 1
	Open Delta	\$1.70/kVa	\$2.30/kVa
	Standard	\$2.00/kVa	\$2.65/kVa
	kWh Charge	10.3¢	12.5¢
	Wind Energy Surcharge	0.4¢	0.0¢
Large Commercial	RATE COMPONENT	CURRENT	AS OF JUNE 1
	kWh Charge	10.3¢	12.5¢
	Wind Energy Surcharge	0.4¢	0.0¢
IPP	Facility Charge	\$50.00	\$100.00
	kWh Charge	8.4¢	9.0¢
	Capacity Charge	\$1.15/kVa	\$1.50/kVa
	Wind Energy Surcharge	0.4¢	0.0¢
Beet Piles – NON-DEMAND	Facility Charge	\$50.00	\$100.00
	kWh Charge	10.3¢	10.7¢
	Capacity Charge	\$2.35/kVa	\$3.00/kVa
	Wind Energy Surcharge	0.4¢	0.0¢
Irrigation Single- Phase	FIXED CHARGE	CURRENT	AS OF JUNE 1
	55-74 kVa	\$42.00	\$60.00
	75-99 kVa	\$55.00	\$90.00
	100 kVa and up	\$65.00	\$110.00
	kWh Charge	12.6¢	11.1¢
	Wind Energy Surcharge	0.4¢	0.0¢
Irrigation Three- Phase	FIXED CHARGE	CURRENT	AS OF JUNE 1
	50-75 kVa	\$90.00	\$105.00
	Over 75 kVa	\$115.00	\$130.00
	kWh Charge	10.3¢	11.1¢
	Wind Energy Surcharge	0.4¢	0.0¢

# GET PUMPED

## - WITH THE TECH THAT WORKS FOR YOU!

Heat pumps have quickly become one of the fastest-selling home heating and cooling products on the market – and for good reason. Heat pump technology efficiently *moves* heat instead of *generating* heat, lowering your energy bill and reducing your dependence on volatile fuel prices.

But what kind of heat pump works best for your home, shop or cabin? We broke down the benefits of air-source heat pumps and mini-split heat pumps to help you decide!



Learn more about PKM Electric's off-peak program and rebate eligibility at [www.pkmcoop.com](http://www.pkmcoop.com)!



### AIR-SOURCE HEAT PUMP (ASHP)

#### HOW IT WORKS

An ASHP doesn't burn fuel to make heat. It simply uses electricity to move heat from one place to another. Think of an ASHP as a heat transporter constantly moving warm air from one place to another, to where it's needed or not needed (depending on the season). A standard ASHP is a self-contained system that uses existing ductwork. The system is composed of an outdoor compressor unit and an indoor air handling unit.

#### BENEFITS

##### VERSATILITY

A single system delivers heat in the winter and cools your home in the summer.

##### WHOLE-HOME EFFICIENCY

Because an ASHP moves heat instead of generating it, the system delivers up to 3X more energy than the electricity it consumes.

##### COMFORT

Your air-source heat pump will deliver steady, automatic climate control to your home – even when switched to a backup fuel source.

##### SAVINGS

In addition to access to our low off-peak program rate, you can receive hundreds in co-op rebates.

#### BEST USE

Whole-home heating/cooling

#### CO-OP INCENTIVES

Rebate of \$300/ton (*less than 17 SEER*)  
Rebate of \$500/ton (*more than 17 SEER*)

Eligible for off-peak program rate  
(around *HALF* the standard rate)



### MINI-SPLIT HEAT PUMP

Similar to an air-source heat pump, a mini-split heat pump is run by a compressor unit placed outside of your home. That unit is connected to an indoor unit by small cables and a refrigerant line. The indoor unit is typically mounted high on the wall of the room that is being heated/cooled.

##### VERSATILITY

A single system delivers heat in the winter and cools your home in the summer.

##### ZONE EFFICIENCY

The system only heats and cools the area that is necessary and transfers heat instead of generating it.

##### NO DUCTWORK

The system does not require ducts and can be installed easily in any room.

##### SAVINGS

In addition to the money saved in efficiency, the upfront cost may be covered in part by our rebate program.

Spot heating/cooling in a home, or full heating in smaller shop or cabin

Rebate of \$300/ton (*less than 17 SEER*)  
Rebate of \$500/ton (*more than 17 SEER*)

Eligible for off-peak program rate (around *HALF* the standard rate)

# ELECTRICITY DEMAND *SET TO SOAR* IN U.S., ABROAD

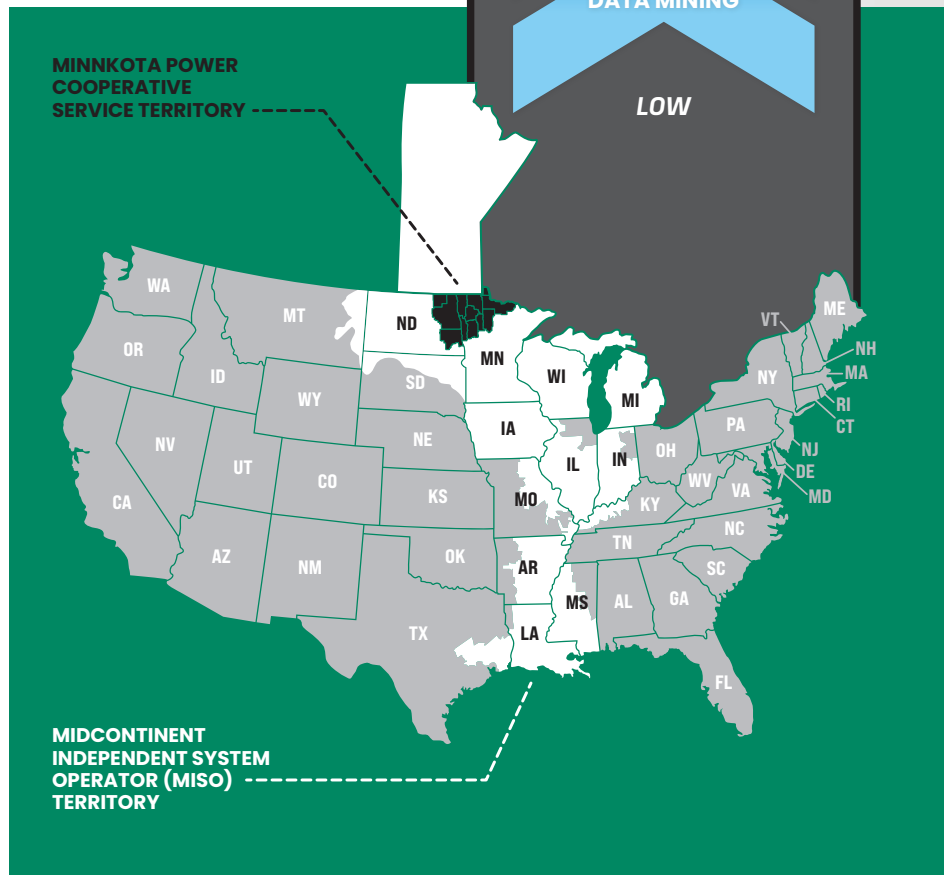
Electricity drives some of the most important components of your life. Electricity keeps your perishable food safe to eat, lights up your home and office, and powers the internet that is woven through many of our daily tasks. As much as we rely on it now, several studies indicate we're about to rely on it a whole lot more. And fast.

According to the International Energy Agency, global electricity consumption is expected to rise 4% annually through 2027 – and then keep rising. With the sudden demand for data centers, artificial intelligence, data mining, electric transportation and more, power suppliers across the world are hustling to figure out how to keep up with soaring load growth while preserving electric reliability, affordability and sustainability.

A new analysis completed by PA Consulting anticipates data centers and transportation electrification alone will drive up electric demand about 2% annually in the U.S. for the next 25 years. In order to meet the need, power generation utilities will need to use every technology that is available – from wind and solar to coal and natural gas to hydro and nuclear. On top of that, the industry must focus on refining new technologies like battery storage and carbon

capture to ensure a balance of reliability and sustainability.

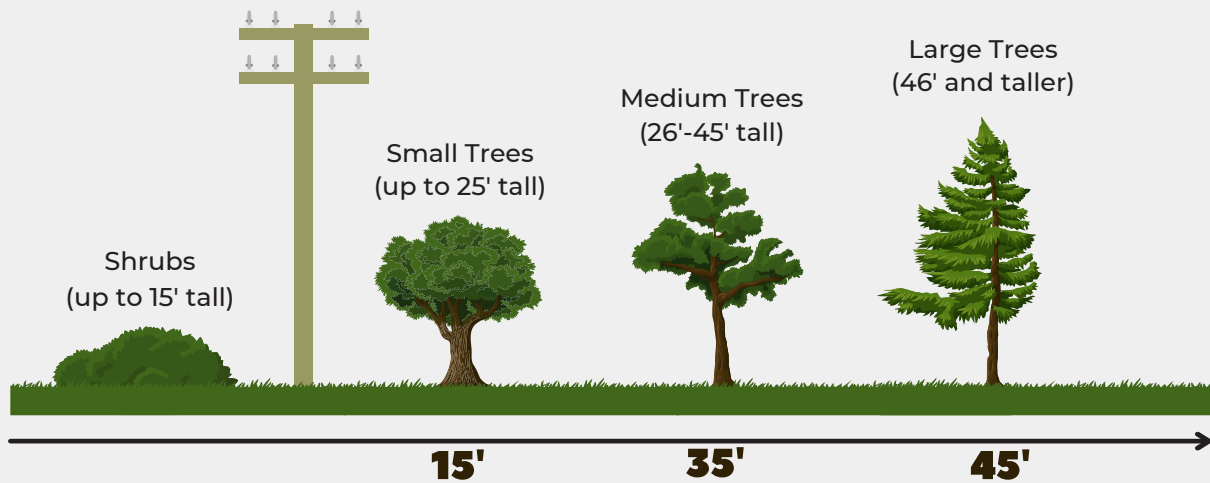
PKM is pleased to be working alongside our wholesale power partner, Minnkota Power Cooperative, to proactively plan for our region's energy future. Along with our current portfolio of coal, wind and hydro power, we're evaluating the infrastructure needed to meet tomorrow's demands. We believe an all-of-the-above energy strategy is the way to power our future, and we're committed to supporting the innovation that will make it possible.





# Plant the **RIGHT TREE** in the **RIGHT PLACE**

The larger the tree, the farther it should be from a power line. Avoid planting beneath power lines, near poles or close to electrical equipment.



Remember, know what's below by calling 8-1-1 before you dig.

Learn more at:



## Don't let controlled burns backfire this summer!

HERE ARE SOME THINGS TO KEEP IN MIND WHEN  
PLANNING FOR A CONTROLLED BURN:

- 1 Keep things like the temperature, humidity and wind speed in mind when planning a controlled burn. Check the radar before beginning a fire.
- 2 **DO NOT** start a fire near power poles. Burning poles can cause wide-spread outages and could be costly for the individual who set the fire.
- 3 Cut grass and weeds, and water areas near any power poles to keep the fire from approaching.
- 4 If a pole does catch fire, call 9-1-1 and PKM Electric Cooperative right away. Even if you can put the fire out yourself, the pole could still be burning from the inside and become extremely hazardous.



# DOWNED POWER LINE and Large Equipment Safety

Wait to fold/unfold or raise/lower equipment until you are well into the field, and away from the field's edge.

## In an accident or contact with a power line:

1. **Stay Inside the Cab:** The ground may be energized.
2. **Call 9-1-1:** Report downed or damaged lines.
3. **Warn Others:** Tell bystanders to stay away.
4. **Wait for Utility Crew:** Do not exit until it's safe.



## If you notice smoke or fire:

5. **Exit Safely:** Cross arms over your chest and jump out with feet together. Do not touch the vehicle and the ground at the same time.
6. **Move Away:** Shuffle or bunny hop with feet together. Get as far away as you can.



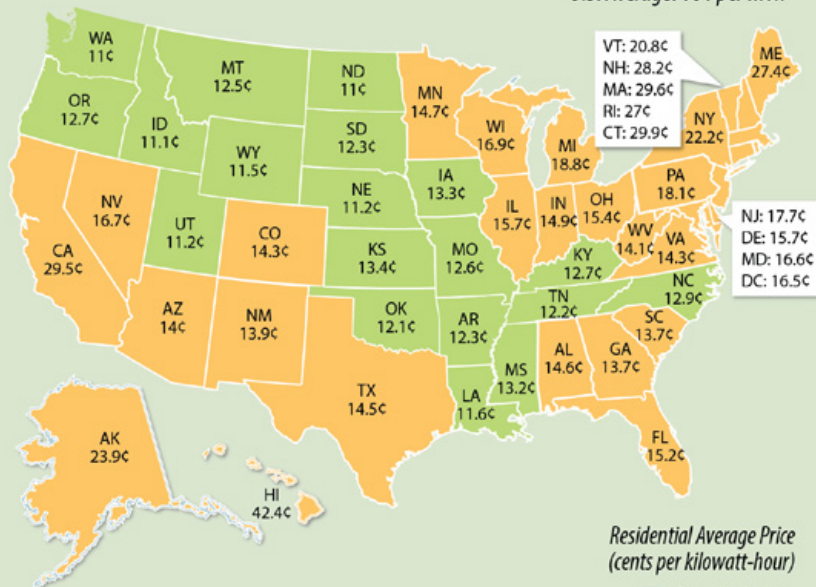
FEDERATED RURAL ELECTRIC  
INSURANCE EXCHANGE

Safe  
Electricity.org®

## Average Prices for Residential Electricity

2023 figures, in cents per kWh

U.S. Average: 16¢ per kWh



Residential Average Price  
(cents per kilowatt-hour)

- Over 13.5¢
- Up to 13.5¢

Source: U.S. Energy Information Administration  
Numbers rounded to nearest tenth of a cent

# 5 STEPS FOR SAFE DIGGING

## Working on an outdoor project?

Careless digging poses a threat to people, pipelines and underground facilities.

## Always call 8-1-1 first!

Here are **5 steps** for safe digging:



### 1 Notify

Call 8-1-1 or submit a request online two to three days before you begin. The utilities affected by your digging will be notified of your project.

### 2 Wait

It may take two to three days for utilities to send a locator to mark any underground lines.



### 3 Confirm

Compare the marks on your yard to the list of utilities contacted by 8-1-1. Confirm that all entities have responded to the request.

### 4 Respect

Protect and follow the utility markers – the flags and/or paint will remain important guides throughout your project.



### 5 Dig Carefully

Be sure to avoid digging within two feet of the markers on all sides. If you can't, you'll need to consider moving your project.

Source: [call811.com](http://call811.com)

# Board meeting **highlights** *January, February and March*

## **A regular meeting of the board was held Tuesday, Jan. 28, 2025.**

Mark Hatton, president who presided, asked for roll call. Upon calling the roll, the president reported that all directors were present with the exception of Director Malm. Director Owens and Copp participated via video conference.

Line Superintendent Joe Marcotte presented the monthly safety and operations report, indicating no accidents and no lost time. Miff from MN Safety was here on Jan. 22 with the topic of Hazard Communication. One of our linemen decided to move on from PKM to Basin, Wyoming. The linemen are going through inventory and installing electronic breakers. Marcotte brought attention to the 2024 Field Report, URD Report, 5-year Outage Report and the 2024 Gopher Bounty. The reports were included in the packet and Marcotte responded to questions received from the directors.

The manager of member services, Danny Schmidt, shared activities within his department. He attended the REMA meeting and shared information he learned there. There is currently 65:32 minutes of dual heat control, 22:23 minutes of yellow zone control and 0 minutes of red zone control. He gave an update on meter happenings in his department. Schmidt let directors know that we will be having the annual meeting at the Warren-Alvarado-Oslo high school again this year with David Lee Catering serving the meal.

The CFO opened her administrative report with an office update. The office is in full swing of year-end activities. The final 219-work order inventory closing for 2024 was processed in December. Books were closed and year-end books will be closed after the meeting. Minnkota and Carr's Tree Service allocations have been booked, which make our margins look good.

The CFO continued with the presentation of the Operating and Financial report for the cooperative. Historical data for margins for a 10-year PTD and YTD comparison were provided and discussed. Revenue is up \$862,152.84 for the year and expenses are under budget by \$357,610.22. Other reported numbers were discussed for December 2024 compared to 2023. Vehicle costs are \$2.14 average cost per mile year to date. The current equity ratio is down from last year at 56.3%.

The CEO referenced his written report outlining recent meetings.

Upon presentation of the reports from the management staff and CEO, questions and comments from the board of directors concerning their reports were addressed.

The CEO stated, according to the bylaws, the board of directors needs a separate resolution for the quarterly review of the financials. Having had the December financial review, a motion was made that the board of directors receive the fourth quarter financials.

The CEO stated it would be necessary for the board to select voting delegates to the annual meetings of Minnkota Power Cooperative and Square Butte Electric Cooperative.

The president stated it is necessary for the board to review and determine the disposition of the non-operating margin. The directors decided based on last year's financial performance not to allocate the non-operating margin.

The CEO presented the listing of Accounts Receivable – Electric to be written off with a total of

\$3,598.24. The CEO reminded the board that this does not end the collection process and that these accounts are turned over to a collection agency. The recovery process has been successful over the years.

The discussion turned to the desirability of making a general retirement. The financial policy sets a goal of a 25-year rotation. Due to the weather, maintaining a steady margin is challenging. The capital credit pay-out method was discussed. A resolution was offered to retire the 2003 and 60% of 2004 member capital totaling \$384,890.23.

Director Woinarowicz and Director Aakre gave their reports on Minnkota and Square Butte.

With the approaching NRTC annual meeting, the voting delegates will change to Mark Hatton and alternate Paul Aakre.

The annual OSHA Form 300A was presented to the directors. The CEO was pleased with the report's results.

The CEO concluded the meeting with miscellaneous information for the directors including information 2024-year end work comp retention, CRC dividends, annual meeting information, financials (coming soon) for Carr's Tree Service, the Cooperative energy sales, REPAC membership, America's Electric Cooperatives PAC and MREA 2024 director election.

## **A regular meeting of the board was held Tuesday, Feb. 25, 2025.**

Mark Hatton, president who presided, asked for roll call. Upon calling the roll, the secretary reported that all directors were present with the exception of Director Woinarowicz. Director Owens participated via video conference.

The operations manager presented the monthly safety and operations report, indicating no accidents and no lost time. The crews are busy with ROW clearing and installing some new electronic breakers as the weather allows. The frost is 4-6' deep and can cause the cable to pull apart.

The manager of member services, Danny Schmidt, shared activities within his department. Schmidt has installed all the 8s/9s meters we received last month. He shared an update on Eaton, and they are still waiting for results from Itron. There are currently 81:34 minutes of dual heat control, 27:35 minutes of yellow zone and 5:01 minutes of red zone control.

The CFO, Karen Olson, opened her administrative report with an office update. The office has submitted all the documents for our audit, March 10. The capital credit process is underway and will hit the March bills. Disconnect for non-payment will start again in April. We are working on finishing up inventory. Revenue is under budget and expenses are way down. The PTD non-operating margin is a negative, due to the Minnkota capital credit allocation. Olson shared information on the Paid Family and Medical Leave Act starting January 2026.

The CEO, Jeff Rustad, referenced his submitted written report outlining the recent meetings he attended during the month of February. Rustad shared highlights from the MREA annual meeting that Mark Hatton also attended.

Upon presentation of the reports from the management staff and CEO, questions and comments from the board of directors concerning their reports were addressed.

The nomination of the PKM Electric Cooperative directors to serve on the Minnkota Power Cooperative

and Square Butte Electric Cooperative board of directors respectively were the next items of discussion.

The CFO, Karen Olson, presented the 2024 RUS Financials and Operating Report Form 7 to the directors. The first two pages are included in the monthly board packet; therefore, she reviewed the remaining pages in depth with the directors as this information is reported annually to RUS, CoBank, CFC and Minnkota.

Director Aakre gave his report on Square Butte. There was no report for Minnkota as Director Woinarowicz wasn't present.

The CEO shared miscellaneous information with the directors including CRC Ballot, ROW clearing, Minnkota's monarch management, Carr's Tree Service financials, Cooperative energy sales and annual meeting information.

## **A regular meeting of the board was held Tuesday, March 25, 2025.**

Mark Hatton, president who presided, asked for roll call. Upon calling the roll, the secretary reported that all directors were present. Director Owens participated via video conference.

Line Superintendent Joe Marcotte presented the monthly safety and operations report, indicating no accidents and no lost time. Miff was here with PCB handling and forklift refresher training with all the employees. The crews have been ROW clearing and performing general maintenance. They have not been doing poles because there is too much frost. We will continue to use Cooperative Development out of Bemidji for our contractor locator for 2025. We also signed a contract with Olson Underground to do our plowing this year.

The manager of member services, Danny Schmidt, gave his report. He is still working with Eaton to get the diagnosis on the meters. They have come back that it is bad factory saunters and boards. Minnkota has had 120 dual heat control which is up from last year. Schmidt attended the contractor training at Mahanomen this week.

The CFO, Karen Olson, shared with the directors the annual audit is underway with Brady Martz. Other happenings in the office are the capital credit process has been finished, accepting scholarships applications and report filing. We have not received many applications for the scholarships; we are hopeful there will be more as the deadline is April 15, 2025. Olson has been looking at disconnect balances; we always have a handful that don't pay for a while but are hopeful we will not have many. Olson has been busy getting information for the cost of service study, and they are making good headway and hoping to have a call shortly with Power System Engineers. The new sick leave act was discussed with more information to follow next month after her district meeting.

The CFO continued with the presentation of the Operating and Financial report for the cooperative. Historical data for margins for a 10-year PTD and YTD comparison were provided and discussed. Revenue was up from the year before. Expenses are under budget for the year by \$401,108.05. We ended the month with a margin of \$112,716.55 for the month. The CFO is looking at doing a loan advance in May but will be watching this very closely.

The CEO, Jeff Rustad, referenced his submitted written report. Rustad went to the Foreman conference and presented. Three-year negotiations with the union went well.



Upon presentation of the reports from the management staff and CEO, questions and comments from the board of directors concerning their reports were addressed.

Director Woinarowicz and Director Aakre shared an update with the directors regarding business at Minnkota Power Cooperative and Square Butte Electric Cooperative.

Director Aakre shared highlights from the PowerXchange conference in Atlanta, Georgia.

The CEO shared miscellaneous information with the directors including inventory reconciliation, Minnkota demand, MREA building, PKM outage reliability, annual meeting, Cooperative energy sales and solar information.

The meeting concluded with Carr's financials.

## MINNKOTA TRANSMISSION LINE INSPECTIONS SCHEDULED FOR FALL

Minnkota Power Cooperative, PKM Electric Cooperative's wholesale power provider, will be inspecting its transmission line structures in preparation for upcoming project work. EXO, a contractor, will be assisting Minnkota personnel in the pole testing. All inspections will be completed using ATVs/UTVs. Minimal land disturbance is anticipated.

The purpose of these inspections is to ensure that electricity can be delivered safely and reliably to your area, as well as prioritize project work. If you have questions, please visit [minnkota.com](http://minnkota.com) or call **701-795-4000**.



Our offices will be closed Thursday & Friday, July 3-4, in observance of

## INDEPENDENCE DAY

*If you experience an outage, please call 1-800-552-7366.*



### ENERGY EFFICIENCY: TIP OF THE MONTH

Take advantage of the warmer weather to reduce home energy use. Avoid using your oven and use a grill instead. Not only will cooking outdoors eliminate the energy used to power the oven or stove, but it will also avoid raising the temperature inside your home.

— Source: [energy.gov](http://energy.gov)

## Electrical Inspectors

### Marshall County

Nick Boman  
651-627-2696

### Kittson County

Ronald Ditsch  
218-779-6758

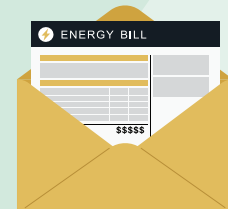
### Polk County

Todd Knaack  
763-516-0344

## NEED HELP PAYING YOUR ELECTRIC BILL?

### Energy assistance may be available!

If you are receiving a low income or suffering from a temporary financial shortfall, these agencies may be able to assist you with your electric bill. We urge you to contact them immediately to avoid disconnection if you feel you are eligible for aid.



### NORTHWEST COMMUNITY ACTION

PO Box 67  
Badger, MN 56714-0067  
(218) 528-3258 or  
800-568-5329  
[northwestcap.org](http://northwestcap.org)

### TRI-VALLEY OPPORTUNITY COUNCIL, INC.

1407 Erskine Street  
Crookston, MN 56716  
(218) 281-9080 or  
Toll Free (866) 264-3729



# ANNUAL MEETING PRIZE WINNERS

**TUESDAY, APRIL 1, 2025**

**Congratulations to all the winners!**

## Winner

## Prize

- |                       |   |
|-----------------------|---|
| 1. Robert Wimpfheimer | Energy Certificate - \$25                                     |
| 2. Jake Craik         | Milwaukee Grinder Tool  |
| 3. Dan Kopecky        | Igloo Cooler and BBQ Cookbook                                 |
| 4. Rodney Larson      | PKM Thermos and Dairy Queen Gift Card - \$25                  |
| 5. Paul Crummy        | Cellular Trail Camera and Hat                                 |
| 6. Todd Bye           | Tumbler and Bass Pro Shop Gift Card - \$25                    |
| 7. James Wallenberg   | Energy Certificate - \$25                                     |
| 8. Gerald Maruska     | Scheels Gift Card - \$25 and Border States Windbreaker/Beanie |
| 9. Nancy Wimpfheimer  | Hand Vacuum   |
| 10. Duane Potucek     | Scheels Gift Card - \$25                                      |
| 11. Michael Boucher   | Scheels Gift Card - \$25 and Border States Sweatshirt/Beanie  |
| 12. Rick Schmiedeberg | Round Electric Grill  |
| 13. John Hess         | RESCO Mug and Hat   |
| 14. Carl Sherlock     | Scheels Gift Card - \$25                                      |
| 15. Roger Loer        | Electric Pressure Washer                                      |

## Winner

## Prize

- |                      |                                     |
|----------------------|-------------------------------------|
| 16. Larry Larson     | Scheels Gift Card - \$25            |
| 17. Greg Dahlin      | Tabletop Grill                      |
| 18. Donald Pawlowski | Scheels Gift Card - \$25 and Beanie |
| 19. Wanda Vonasek    | Round Grill                         |
| 20. Delbert Vonasek  | PKM Extension Cord and Hat          |
| 21. Allen Buchner    | PKM Coleman Camp Chair              |
| 22. Don Taus         | Grilling Set and Mitt               |
| 23. Lowell Hamrick   | PKM Sweatshirt and Tumbler          |
| 24. John Wawrzyniak  | Scheels Gift Card - \$25 and Beanie |
| 25. Herb Maurstad    | Visa Gift Card - \$50               |
| 26. Clifford Schulz  | Visa Gift Card - \$200              |

## Grand Prize:

Keith Potrament

\$500 Energy Credit

## Kids Prize:

Liam Crummy

Summer Fun Gift Basket

# SAFETY DEMONSTRATION FOR YOUNG STUDENTS

Scott Slusar, PKM line crew foreman/safety coordinator, did a safety demonstration for all the Kittson County fifth and sixth graders at the Kittson County fairgrounds. Ninety-seven kids and 10 teachers and paras were in attendance.

