

## OUR SEVEN COOPERATIVE PRINCIPLES

October is National Cooperative Month and PKM Electric Cooperative is proud to be the local electric cooperative for your region! As a cooperative, we operate a little differently than other electric utilities. Since we are member-owned and operated, we are rooted in seven key cooperative principles that guide us in always putting our members' needs first.



### COOPERATION AMONG COOPERATIVES

By cooperatives working together through local, national, regional and international structures, we can improve services, bolster local economies, and deal more effectively with social and community needs.

### DEMOCRATIC MEMBER CONTROL



Members actively shape policies and choices for our cooperative. Directors are elected from within our membership and held accountable by our members. All members also have equal voting rights.

### MEMBERS' ECONOMIC PARTICIPATION

Members invest fairly and control the cooperative's capital. Part of the capital remains the common property of the cooperative. Any surpluses are allocated by the members to serve goals like growth, reserve funds and approved ventures – and some even comes back to members in the form of capital credits!



### AUTONOMY AND INDEPENDENCE

Cooperatives are autonomous organizations controlled by their members! If the cooperative enters into an agreement with an organization or raises capital from an external source, it does so on terms that ensure democratic control for the membership.



### OPEN AND VOLUNTARY MEMBERSHIP

Membership is open to anyone who would reasonably use our services and embraces membership responsibilities, regardless of their background.

### EDUCATION, TRAINING AND INFORMATION

Education empowers growth for the members, representatives and staff of PKM Electric Cooperative. Spreading cooperative awareness enhances understanding of the cooperative and the cooperative way to the community and beyond.



### CONCERN FOR COMMUNITY

As a cooperative, we are devoted to the sustainable development of our communities shaped by our member-supported policies.



*Thank you to our members for your trust and stewardship throughout PKM Electric Cooperative's years of providing affordable, reliable and safe energy to the region.*





# CEO Report

**JEFF RUSTAD**  
CEO  
PKM Electric Co-op

I want to thank the members who stopped by to have pumpkin pie on Oct. 17 in the office and Oct. 18 in the Hallock shop to celebrate Co-op Month. The staff enjoyed visiting with you. October is Co-op Month, and as we have in the past years, we included a form in your monthly bill to fill out and send in for energy credit drawings. We had prize drawings on Pie Day for the members who came in for pumpkin pie, and the winners for Pie Day are posted in this issue. The winners for energy credits will be drawn on Nov. 15 and posted in the next issue. Unlike investor-owned utilities, PKM is a not-for-profit organization. If your cooperative shows a profit, part of those profits are allocated back to the membership as capital credits.

Your PKM board of directors is very conscious about costs, but realizes we need to update and replace our infrastructure to maintain reliability in the future. Currently PKM has around \$37 million invested in total utility plant and spends about \$1.5 - \$2 million per year on additions, replacements and equipment updates. Currently cooperatives supply power to about 42 million Americans and these cooperatives serve power to 75% of the land mass in the United States. As I am writing this article,

we have two power plants down for unscheduled outages. Minnkota Power Cooperative, PKM's wholesale power provider, is buying 180 megawatts of power out of the market to make sure our lights are still on. Being a member of the cooperative, we are part of something bigger than just PKM. As cooperatives, we help each other whether it be a storm or material for a job that is not readily available through our vendors. It is great to be part of a cooperative family that is always working together to keep the lights on. I want to thank all the members of PKM – without you and the ones who came before us, we would not exist.

We have had a few outages caused by equipment in the lines – just a reminder to watch for power lines. The line crew has been very busy, but our days are numbered now for installing underground cable and finishing those projects. We should be seeing a new digger truck by the end of this year that has been on order for two years. Electric sales in the last couple of months have helped us stay positive on the revenue, even with the added expenses of materials, fuel and equipment. PKM along with multiple cooperatives in Minnesota with the help of MREA, Star Energy, and Power Systems Engineers submitted projects as a group for the IJA grant funding that became available. We just found out the other day the group was not included in the funding that was just

given out, but we can resubmit in the future if more funding is available. PKM submitted two projects totaling \$3 million, and we would have had to pay 50% of the cost of those two projects if they were accepted. The only problem with these types of grants is the hoops they make you go through to apply. Plus, you have to fund them until they are done and you hope they give you the funding.

We still have a couple contractors changing yard lights to LED. We should be able to finalize this grant project by the end of the year. PKM is working on trying to get another tool grant also – we had received a \$10,000 grant a few years ago. I want to remind the heat pump owners to clean your heat pump outside before it gets too cold. I usually wash mine out a few times a year, making sure all the drain holes are open on the bottom. And check or replace your air filters. If you have off-peak you should check your backup furnace now just to make sure it is working. A reminder that the Cold Weather Rule has gone into effect now, so you need to have paperwork in place with PKM to protect yourself from disconnection. If you are in need of help paying your bill, please contact Tri-Valley in Crookston at 218-281-9080 (western Marshall and Polk counties), or Northwest Community Action in Badger at 218-528-3258 (eastern Marshall and Kittson counties). Until next time.

## HOLIDAY CLOSING NOTICES:

PKM Electric Cooperative will be closed for the following holidays:

**Friday, Nov. 10, Veterans Day**

– and on –

**Thursday, Nov. 23, Thanksgiving**

– and on –

**Monday, Dec. 25, Christmas**

## September/October 2023 (Vol. 77, No. 5)

The PKM News (USPS 417060) is published six times a year: February, April, June, August, October and December, by PKM Electric Cooperative, Inc., 406 N. Minnesota St., Warren, MN 56762. Periodicals postage paid at Warren, MN. Subscription 25¢/year for members, \$2.50/year for non-members. POSTMASTER: Send address changes to PKM Electric Cooperative, Inc., P.O. Box 108, Warren, MN 56762-0108.

### Office hours

8 a.m. to 4:30 p.m., Monday through Friday  
218-745-4711 or 800-552-7366

### Electrical after-hours emergencies

800-552-7366  
e-mail: [info@pkmcoop.com](mailto:info@pkmcoop.com)  
website: [www.pkmcoop.com](http://www.pkmcoop.com)

### Next board meeting

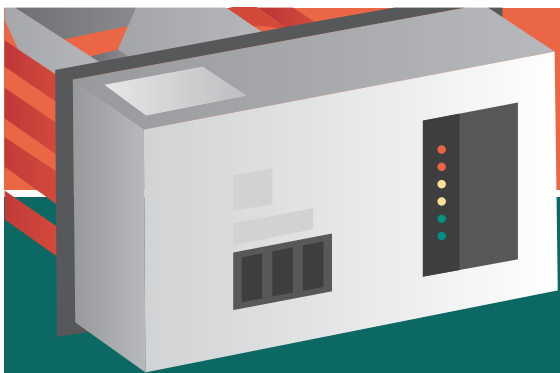
Board meeting to be held the last Tuesday of the month.

### Officers and Directors

President ..... Mark Hatton  
Vice President ..... C.J. Peterson  
Secretary-Treasurer ..... Wayne Malm  
Directors ..... Paul Aakre, Jerred Copp, Steve Goodwin,  
Chris Mortenson, Blake Owens, and Tom Woinarowicz  
CEO ..... Jeff Rustad  
Editors ..... Danny Schmidt, Megan Dagoberg

*This institution is an equal opportunity provider and employer.*





## *The power of the*

# PLENUM

If you've never heard of an electric plenum heater, you're not alone. Plenums are the unsung hero of electric technology, creating a dual-fuel heating solution that offers the benefits of PKM Electric Cooperative's low-cost off-peak heating program. If you have a fuel oil or propane heating system, a plenum will help lower your heating bills and protect you from the volatility of fuel prices.

### HOW DO THEY WORK?

A dual-fuel electric plenum heater is one of the most common off-peak electric heating systems available. Easily adapted to an existing fuel oil or gas/propane forced-air system, a plenum heater uses your existing furnace fan to move air across the plenum heater elements to heat your home. Both your fossil fuel furnace and the electric plenum heater use the same thermostat and ductwork.

In most cases, a plenum heater can be installed in conjunction with a central air conditioning system or an air-source heat pump.

### WHAT ARE THE BENEFITS?

1

#### *They're easy*

A plenum heater is one of the easiest ways to convert your propane or oil furnace into a dual-fuel heating system, especially during a remodel or new construction.

2

#### *They're cost-effective*

The plenum is a cost-effective way to integrate reduced-rate off-peak electricity into your heating system. The equipment itself is also low-cost, and it helps lengthen the lifespan of your gas furnace.

3

#### *They're responsible*

The plenum is a safe and clean heating alternative for any home or building, helping you to lower your dependence on propane or fuel oil.

### HOW DO I SAVE MONEY?

- Receive a **co-op rebate of \$25/kW** (up to \$1,500) when installed on the off-peak program.\*
- Receive the **reduced off-peak program rate**, nearly 50% lower than the standard rate.\*

*\*Check with your utility on program restrictions and additional rebates.*

### LEARN MORE



Electric heat can't be beat. To learn more about the right heating option for your home, visit **ValueofElectricity.com**.



# A STROLL DOWN MEMORY LANE

A look back at one of the earliest published PKM News // Warren, Minnesota // February, 1947



C. W. Bell  
Warren, Minn.

## The P. K. M. NEWS

P. K. M. Electric Coop., Inc.

Sec. 562, P.L. & R.

U. S. Postage  
PAID  
Permit No. 60  
Warren, Minn.

Volume 2

Warren, Minnesota, February, 1947

No. 1

### EXTRA!

#### Temporary Sub at Drayton Energized!

60 Kittson County Farmers Connected Immediately—  
175 More to Be Connected as Rapidly as Distribution  
Lines Completed by Contractor.

At 6:00 P. M. on February 20, JULIAN VAN BUREN, Coop Line Chief, energized a new circuit feeding out of a temporary substation located just across the Red River from Drayton, N. Dak. that sent electric power into Coop lines located in Teien, South Red River, and Skane Townships of Kittson County for the first time. The lines had been ready for energization since the latter part of December of 1946, but due to their distance from the generating plant at Grand Forks, it was considered unwise by Coop officials to energize them until additional high voltage power was made available in the immediate area. Henry Peterson of Drayton was the first Member on the new lines to have his transformer connected to the system. His reaction, to say the least, after months of waiting was one of profound relief.

The new connection not only provides ample power for the 160 miles of distribution line being built in Kittson County for the Coop by the Duwane Construction Co. of Pelican Rapids, Minnesota, but also will afford immediate and effective relief to the northern extremities of the existing system which, because of its distance from Grand Forks, has become overtaxed during the past two months as a consequence of winter peak loads. Service will be cut back as far as northern Oak Park Township in Marshall County and switched over to the new source.

MR. PARKYN of the DUWANE CONSTRUCTION CO. states that stringing operations have been completed on an additional 50 miles of line feeding into Svea, Davis, Tegner, Springbrook, and Jupiter Townships and that transformer crews are now completing installations as rapidly as possible. It is his hope that he can deliver most of this line to the Cooperative by the middle of March.

### Manager's Letter

Dear Folks,

Well, its time to "rise and spread the alarm!" Spring beckons just around the corner and that means another full scale construction season about to get underway. Despite our recent forebodings, things look pretty good right at this point, and barring another crippling coal, steel or copper strike, we anticipate fairly good material deliveries for the first half of 1947.

This week the first car of poles for Marshall County E unloaded at Argyle and all poles for Polk County D are in stock at Euclid, Angus, and Warren except for 289 35-6, but 500 of these have been promised by suppliers for delivery by May 1. Approximately 70% in value of materials required for Polk County D are now segregated in storage for that job and suppliers are exceedingly optimistic on early delivery for the balance. We strongly urge our D section members to get their wiring done as soon as possible for we feel that wiring materials and electricians are going to be more critical this coming summer than line materials. Drop into the office if you are in doubt as to whether or not you are on Polk County D.

Good news to our Kittson County friends now under construction is the energization of our temporary substation at Drayton. Before very long the "kilowatts will be chasing the amperes" around many a new farm in Kittson County.

To the members on our existing line, let me congratulate you on the promptness you displayed in paying your January energy accounts. Not one member out of the entire connected 568 was late in paying his January power bill; truly a remarkable record and an excellent way to start off the new year.

Sincerely

BOB GRAHAM, Manager.

—PKM—

### Coop Officials in Washington, D. C.

Victor Edman, President of the Cooperative, and Robert Graham, Manager, departed for Washington, D. C. on February 22 for the purpose of attending a conference of Coop officials from this region. The conference is being sponsored by the National REA Headquarters and its objective is the discussion of mutual problems common to REA Coops in this region. While in Washington efforts will be made to secure an early allocation of funds for additional lines. At the same time evidence of the availability of materials for 117 miles of line in Polk County, known as the Coops "D" Allocation, will be presented to the Engineering Division of REA to the end that these lines may be placed for bid letting sometime in March. On their return trip from Washington, Mr. Edman and Mr. Graham will stop over at Minneapolis on March 3 and 4 for the purpose of attending the Annual Meeting of the Minnesota Electric Cooperative Assn. being held at that City.



## Argyle Member Participates in Appliance Tests

Some of our newer members possibly have the impression that the current consumption and cost of operating an electric stove makes their installation prohibitive in the average farm home. A few weeks ago Walter Malm, one of our Argyle members, suggested that we meter the monthly consumption of his stove and thereby have some actual facts to present to our members. Both Walter and Mrs. Malm were convinced that their new General Electric stove was the latest in low cost, clean, efficient cooking. Well, we thought that they had a good idea so on the 29th of January we installed meter No. 23294015 on their stove and for good measure installed meter No. 23107633 on their seven-foot capacity Norge refrigerator. The original readings were zero and it will be interesting to report to you the results of these consumption tests in future issues.

Walter operates a farm in partnership with Geo. Eckman who lives across the road from him. George and Walter have the following electric powered equipment in use from the production standpoint: Marquetter arc welder, fanning mill, 2 set intermatic time clock in laying house, double unit George milker, De Laval separator, bench saw, electric drill, and paint sprayer. Walter gives his vote to the welder as being the handiest piece of equipment in his line.

To Mrs. Malm her electric stove gets top choice. Mrs. Malm also has a Filter Queen vacuum, iron, toaster, Maytag washer, Zenith radio, and Sunbeam mixer.

George's latest acquisition is a Shick doublehead razor. The Malm's also have a Montgomery Ward pressure system with bath and water closet to boot.

The Malms have three children—all boys. Right now we have a deal in the offing whereby one of the boys will brood 300 chicks next spring under an electric hover and in exchange for current consumption records and other operating data, the Coop proposes to furnish

the electricity to be used on this project without cost. This information should prove interesting to those members who doubt the efficacy of an electric brooder as an efficient, low-cost, dependable method of raising chicks.

—PKM—

## Service Interruption Explained

Despite recent blizzards of unusual ferocity uninterrupted service was maintained on the entire system during January and the first part of February. Then, just as the most savage and recent storm was subsiding, O. M. Stadheim of East Grand Forks, called on February 7 at 8:30 P. M. to report an interruption of his service at 8:20 A. M. About 10 minutes later a call from Hotvedt Brothers of East Grand Forks revealed his service off. A call was then made to the Minnkota Power Coop at Grand Forks and we were informed by the plant operator there that the entire transmission underbuild feeding into Minnesota was "out", and the trouble was caused by a faulty breaker in the substation at Grand Forks. The Minnkota boys "wrestled" with the breaker for about 40 minutes before service was restored. About 1,000 farms were out of "lights" for 40 minutes, as this fault not only affected our entire system but also around 410 members of the Red River Valley Power Coop. Association located at Halstad. Our Coop will have within the next 15 days two sources of power and this will reduce the extent of future outages and insure us against any outages of long duration.

—PKM—

## IMPORTANT NOTICE!

The Capital Credits plan, an explanation of which will be given in your newsletter shortly before the next annual meeting, is of importance to you as a participating member in your electric Coop! Watch for it! Read it! Understand it! Then come to the next annual meeting and vote on it—for or against—as you see fit!

## KELVINATOR--

*Refrigerators*

*Stoves*

*Water Heaters*

*Home Freezers*

**Major Paint & Appliance Co.**

204 DeMers Avenue

**East Grand Forks, Minn.**

The

## 'Surge' Milker

Can Now Be Installed on Your Farm  
in "Jig Time".

Enjoy MONEY MAKING MILKING  
which only the SURGE 'Tug & Pull'  
will give.

See Your SURGE Dealer or  
Write or Phone

**Goodman Farm Electric**

217 South Fourth St.  
GRAND FORKS, N. D.  
Phone 1235



## 300 Plus Club

## FARM

Andrew Hanson,	
East Grand Forks.....	3326
Thomas Driscoll,	
East Grand Forks.....	2031
William Strickler,	
Euclid.....	1200
Jake Fehr,	
East Grand Forks.....	1173
Edward Erickson,	
East Grand Forks.....	1154
Thorvald Hagen,	
East Grand Forks.....	1122
Anton Pulkrabek, Angus	1030
Edwin Morberg,	
Alvarado.....	1021
Charles Hetwick,	
East Grand Forks.....	1000
Ansel Driscoll,	
East Grand Forks.....	976
Lewis Flatten,	
East Grand Forks.....	874
Bennie Strickler, Euclid	830
Harold M. Johnson,	
Stephen.....	828
Helmer Horken,	
East Grand Forks.....	811
Isador Weslowski,	
Stephen.....	740
Strong Brothers,	
Alvarado.....	730
Eddie Pulkrabek,	
East Grand Forks.....	720
Kovar Brothers,	
East Grand Forks.....	668
A. J. Kobetsky, Angus	661
Oscar Olson, Alvarado	644
Lon Norton,	
East Grand Forks.....	635
Minnesota State Prison	
Farm, EGF.....	632
Carl Aas, Alvarado.....	601
Hotvedt Brothers,	
East Grand Forks.....	601
Leslie Tack,	
East Grand Forks.....	600
Leonard Driscoll,	
East Grand Forks.....	597
Mrs. Sadie Barrett,	
East Grand Forks.....	590
J. Leonard Boushee, Oslo	574
Henry Thureen,	
East Grand Forks.....	565
John Mack,	
East Grand Forks.....	550
Amundson Brothers,	
East Grand Forks.....	519
Hans Stordahl,	
East Grand Forks.....	519
Hans Stordahl,	
East Grand Forks.....	512
Walter Pulkrabek, Euclid	502
George Gust,	
East Grand Forks.....	495
Oscar Thureen,	
East Grand Forks.....	488
H. D. Strickler, Euclid.....	478
Frank Machal,	
East Grand Forks.....	475
Arthur Swanson,	
Alvarado.....	461
Clarence Olson, Oslo.....	456

O. W. Peterson,	
Alvarado.....	454
Paul Kaml, Euclid.....	453
J. O. Christianson,	
East Grand Forks.....	453
Adolph Glese, Euclid.....	452
Arthur Nelson, Argyle.....	450
Thomas Ovsak,	
East Grand Forks.....	450
Edward Zak, Angus.....	450
Christ J. Hanson,	
Drayton.....	447
Albert E. Storbakken,	
Oslo.....	440
Harold Amundson,	
East Grand Forks.....	440
Sam H. Dalen, Oslo.....	434
Emil Larson,	
East Grand Forks.....	430
Robert Tucker, Euclid.....	427
Victor Edman, Alvarado	424
Bloyd Hendrickson,	
East Grand Forks.....	421
Leslie Arnold, Angus.....	419
Le Roy Wood, Angus.....	412
Gustave Edman,	
Alvarado.....	400
Bergman Brothers, Oslo	390
Noble Nelson, Oslo.....	388
Mary Flatten,	
East Grand Forks.....	369
W. C. Grundstrom,	
Drayton.....	355
Morris Maruska, Angus	351
John Kliner, Euclid.....	346
Roy Edman, Alvarado.....	342
Anton Arnold,	
East Grand Forks.....	340
Thureen Brothers,	
East Grand Forks.....	334
J. H. Filipi, Angus.....	331
Elias Herseeth, Drayton.....	330
Ellert P. Fehr,	
East Grand Forks.....	324
Max Kasprick, Angus.....	318
Sam Anderson, Alvarado	318
Charley Kozel,	
East Grand Forks.....	315
Anton Veralrud, Oslo.....	313
Louis Zak,	
East Grand Forks.....	310
Arthur Hanson, Oslo.....	307
Jos. J. Stengl, Angus.....	303
Edwin Enge, Oslo.....	301
Albert Hammerlund,	
Oslo.....	300
Marshall Morberg,	
Alvarado.....	300
Seward Mostad,	
East Grand Forks.....	300
Carl Jensen, Oslo.....	300
Melford Knutson,	
Alvarado.....	300
Residential	
P. B. Willert, Sherrack	378
Commercial	
Big Woods Oil Co., Oslo	329
Claus Fleman Store,	
Euclid.....	350
Ostrand Store, Drayton.....	785
F. E. Glass, Euclid.....	1000

PKM  
Operating Report

	Jan. 1944	Jan. 1945	Jan. 1946	Jan. 1947
Members Billed.....	202	249	327	568
Miles Energized.....	140	151	166	275
Density.....	1.44	1.65	1.97	2.07
Average KWH.....	117	175	168	173
KWH Bought.....	26,100	52,530	56,560	123,001
KWH Sold.....	23,567	43,744	54,927	98,494
Line Loss.....	10%	17%	2%	20%
Average Bill.....	\$6.45	\$7.81	\$7.41	\$7.47
Revenue Per Mile.....	\$9.32	\$12.87	\$14.60	\$15.43
% Minimum Bills.....	18%	11%	19%	13%

## IMPORTANT NOTICE!

"Red" Van Buren, our Line Chief, has now been successful in securing phone service at his residence. All "trouble" calls should be channeled through: During office hours call 367 Warren. After office hours call 320, manager's number, or 404, line chief's number. On all long distance calls, you should inform the operator that the cost of the call is to be charged against 367 Warren.

PKM

Loan Applications Increased as 1946  
Building Tempo Stepped Up

The end of 1946 found REA with more than \$225,000,000 in pending loan applications from its borrowers, an increase of approximately \$25,000,000 over the previous year-end total.

At the end of the year, REA had allocated \$957,000,000 as rural electrification loans and had approximately \$109,000,000 left as the unallocated portion of the \$250,000,000 loan fund authorized by Congress for the fiscal year ending June 30, 1947. Of the allocated total, \$595,000,000 had been advanced to the borrowers—principally member-owned rural electric cooperatives. Advances during 1946 totalled \$131,000,000 as compared with advances of \$57,000,000 in 1945.

With increasing supplies of construction material available during the latter part of the year, REA's borrowers were able to energize approximately 50,500 miles of new power distribution lines during 1946, extending electric service to 265,000 new rural consumers. Twenty-four new REA-financed rural power systems started operations during the year. Comparative totals for 1945 were: 39,000 miles of new lines energized; 192,700 consumers added, and 22 new systems put into operation.

Increased 1946 production of poles and line hardware, such as bolts, pins and pole anchors, helped to relieve one of 1945's most serious bottle-necks and contributed to the greater line construction progress of many REA borrowers in 1946.

## General Electric

Refrigerators	Water Heaters
Ranges	Dish Washers
Vacuum Cleaners	Ironers
Radios	Electric Blankets
Washers	Electric Sinks
Fans	Electric Clocks

## Electric Water Systems

Pump Jacks	Tank Heaters
Time Switches	Lighting Fixtures

## G-E Farm Welders

Farm Wiring Contracting  
Appliance and Motor Repair  
Speedliner Boats  
Martin Outboard Motors

## Dixon Electric

309 DeMers Ave. East Grand Forks, Minn.





*Si Sez:*

# R. E. A. MEMBERS

NOW Is The Time And Here Is The Place  
To Order Your New Electric Appliances!

## Popplers Have The Best

*Here Are Our Lines:--*

WASHING MACHINES: Bendix, Easy, 1900 Whirlpool.

VACUUM CLEANERS: Eureka, Royal, Hamilton Beach.

REFRIGERATORS: Frigidaire, Philco, Admiral.

HOME FREEZERS: Freeze-All, Philco, Frigidaire, Admiral.

ELECTRIC RANGES: Estate, Frigidaire, Admiral.

GAS RANGES: Roper, Estate, Florence.

SEWING MACHINES: National, Portable, Treddle Machines and Consoles.

RADIOS and RADIO-PHONO COMBINATIONS: Capeheart, Philco, Stewart-Warner.

TELETRON ELECTRIC CLOCKS, EUREKA CORDLESS IRON, MIRACLE CONVENTIONAL TYPE IRONS, HAMILTON BEACH MIXERS AND A COMPLETE LINE OF SMALL ELECTRICAL APPLIANCES SUCH AS TOASTERS, ROASTERS, COFFEE MAKERS, ETC.

PIANOS: Steinway, Chickering, Haddorf, Krakauer, Sohmer, Hardman, Minnipiano, Conover, Cable, Schiller, Kingsbury, Wellington, Kimball, Whitney, Wurlitzer, Gulbrandsen, Webber.

Place your Order with Popplers today. Buy from the old reliable  
"House of Service"

The Appliance Center Of The Northwest

# POPPLER

## PIANO & FURNITURE CO.

*Grand Forks, N. D.*

*Thief River Falls, Minn.*

314 Kittson—Back of J. C. Penney's



# 'THE MATH DOES NOT ADD UP'

## EPA power plant proposal puts grid reliability at risk

By Ben Fladhammer /// Photography Michael Hoeft

This summer, the Environmental Protection Agency rolled out new regulations for power plants that, if enacted as proposed, will accelerate grid reliability issues and threaten the affordability of electricity across the nation.

Minnkota Power Cooperative, PKM Electric's wholesale power provider, and its industry partners issued comments to EPA in August about the unworkable timelines and requirements in its most recent proposals to regulate greenhouse gas emissions from both coal and natural gas power plants. Utilities would be required

to implement carbon capture and hydrogen technologies that are promising but not yet commercially available, especially on an unreasonably expedited timeframe. This threatens to push more baseload and dispatchable plants offline in the next decade as the risk of electric grid instability and blackout issues continue to grow.



"Although Minnkota supports investment in carbon capture and storage (CCS) technology, the proposed rule overstates the technology's current and future capabilities as well as

the timeline in which CCS can feasibly be deployed," said Shannon Mikula, Minnkota's environmental manager.

The rule requires that coal-based power plants be retrofitted with CCS technology by 2030 or consider various options leading to closure. Natural gas power plants are also required to install CCS, which has never been done on a gas plant before, or co-fire with low-carbon hydrogen, which currently has no reliable supply or transportation infrastructure. Some exceptions are available for peaking gas plants, which operate a limited number of hours each year.



EPA is expected to finalize its proposed power plant rule in the spring of 2024. It is anticipated that the final rule will be subject to significant litigation.

## What about Project Tundra?

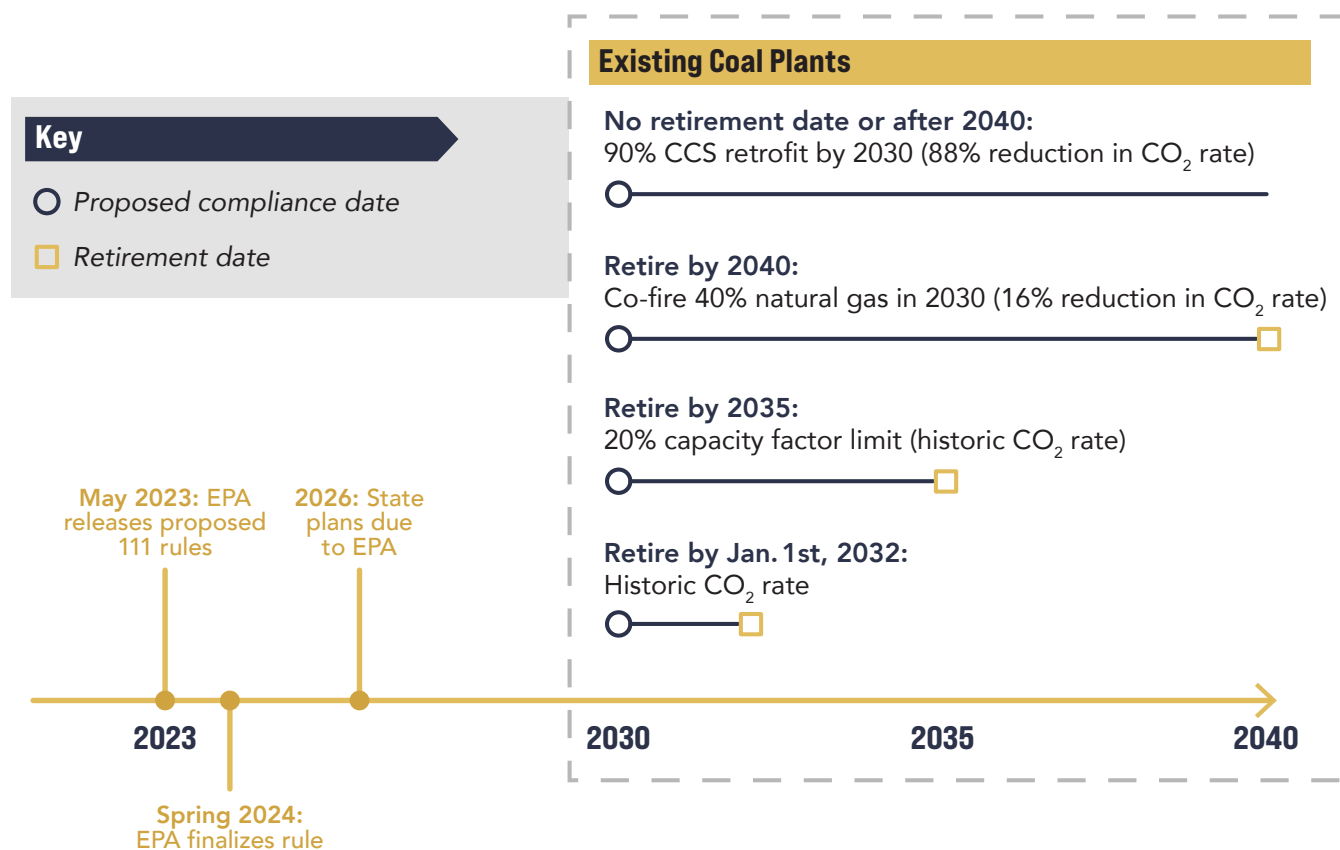
In 2015, the Obama Administration released the Clean Power Plan, the first-ever rule to regulate carbon dioxide (CO<sub>2</sub>) emissions from power plants. That rule was stayed by the U.S. Supreme Court and ultimately never implemented. The Trump Administration replaced the Clean Power Plan with the Affordable Clean Energy rule, which also faced litigation and was never implemented.

Minnkota has responded to these rulemakings by working to develop Project Tundra – one of the world’s largest CCS projects at the coal-based Milton R. Young Station. During this time, Congress enhanced tax credits in 2018 and 2022 to incentivize CCS project development. Financing for the project is largely made possible through federal 45Q tax credits, which provide \$85 per ton of CO<sub>2</sub> that is permanently stored.

“Despite all the regulatory uncertainty, our board and staff have committed to the view that we are going to live in a carbon-managed world and we’ll need to

develop technologies and strategies to help us navigate this challenge,” said Mac McLennan, Minnkota president and CEO. “We want to be part of the solution, but there needs to be an understanding that America’s electric grid can’t be completely transformed overnight.”

After nine years of development, Minnkota is nearing a final decision on Project Tundra in 2024. However, even Project Tundra would not meet full compliance with EPA’s proposed requirements at both Young Station generating units.





"Project Tundra benefits from strong local, state and federal support, along with ideal geology for CO<sub>2</sub> storage directly beneath the power plant site," McLennan said. "Not every coal plant is equipped with these resources and it will be near impossible for another utility to start from scratch and develop its own unique CCS system on the timeline provided under this proposal."

## **Minnkota, grid operators express concern**

Reliability has and always will be essential to Minnkota and its member cooperatives' mission. Regulators, lawmakers and grid operators have articulated rising fears of a reliability crisis, which will be further exacerbated by the EPA proposal. According to the North American Electric Reliability Corporation, the "disorderly" retirement of existing generating assets across the country, and insufficient replacement of that power capacity, is directly impacting reliability and increasing the risk of blackouts.

"The math does not add up," Mikula said. "Dispatchable generation is retiring faster than replacement resources are coming online. In the MISO region where Minnkota operates, the dearth of dispatchable resources is well-documented and places the entire region on a heightened capacity shortage alert."

MISO joined with the other major grid operators across the U.S. to issue public comments to EPA

stating they "are concerned that the proposed rule could result in material, adverse impacts to the reliability of the power grid."

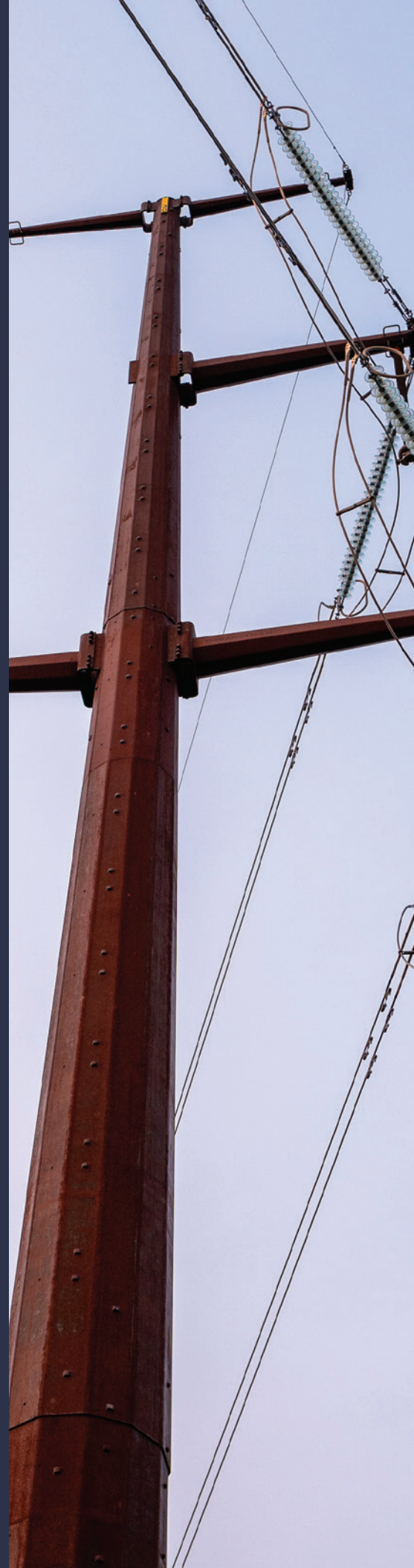
"If the technology and associated infrastructure fail to timely materialize, then the future supply of compliant generation — given forced retirements of non-compliant generation — would be far below what is needed to serve power demand, increasing the likelihood of significant power shortages," the grid operators said.

## **More regulations in process**

Minnkota and its industry partners also issued comments in June on EPA's proposal to further regulate mercury and particulate matter emissions from power plants. While Minnkota has robust systems in place at the Young Station to significantly reduce these emissions, the rules would require additional cost for near unquantifiable benefits.

EPA is expected to issue its final rule in 2024. Again, the end result would be more reliable power plants being forced offline when America's electric grid needs them most.

"People use the phrase 'keeping the lights on,' but it's so much more than that," McLennan said. "It's keeping families warm in the winter, helping American businesses stay competitive, ensuring hospitals and essential resources are available at all times and protecting our national security. These are things that depend on a reliable electric grid and we should take that seriously."





# Board meeting highlights August

## A special meeting of the board was held Tuesday, Aug. 22, 2023.

Mark Hatton, president who presided, asked for roll call. Upon calling the roll, the president reported that all directors were present.

Director Woinarowicz and Director Aakre gave their reports on Minnkota and Square Butte. President Hatton and Jeff Rustad, CEO, presented highlights from the Energy Summit conference they attended.

Line Superintendent Joe Marcotte presented the monthly safety and operations report, indicating no accidents and no lost time. MREA was here with the topic of fatigue in operation. The linemen have been very busy with installing URD for cable replacements and service improvements, along with everyday maintenance and random outages.

The manager of member services, Danny Schmidt, provided an update to directors regarding recent activities within his department. Schmidt has been getting RF metering working in the Euclid area. They have fixed the issues with Radium and Strandquist; they are now reading in well. He gave an update on some of the solar arrays and we have had a few other inquiries. Schmidt shared highlights from his Design Team meeting at Minnkota. PKM will be doing Pie Day for Co-op Month on Oct. 17-18, 2023.

The CFO provided her report via call to order as she was unable to attend due to attending her REMA meeting in Duluth.

The CEO shared the operating and financial report for the cooperative. The inventory is higher than it was last year, and kWh were down from last year.

The CEO highlighted information received throughout the month. He has his REMA meeting coming up the first week of September.

Upon presentation of the reports from the management staff and CEO, questions and comments from the board of directors concerning their reports were addressed.

Brady Martz & Associates, P.C. has completed Form 990 for review. The drafted information was distributed to the directors for verification of completeness and accuracy.

The CEO shared with directors that the upcoming 2023 Regional Meeting has voting delegates for associations of which the cooperative has membership.

Financials were provided for Carr's Tree Service. Other informational items were presented including an economic overview, CFC election, RESCO voting delegates and RESCO dividend, cooperative energy sales, solar and load forecast.

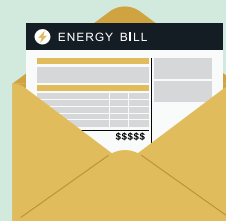
## ENERGY EFFICIENCY TIP OF THE MONTH

Did you know using your dishwasher is more energy efficient than washing a load of dishes by hand? To maximize efficiency, wash full loads in the dishwasher and don't block the arms or other parts that move while the appliance is in use.  
— Source: Dept. of Energy

## NEED HELP PAYING YOUR ELECTRIC BILL?

### Energy assistance may be available!

If you are receiving a low income or suffering from a temporary financial shortfall, these agencies may be able to assist you with your electric bill. We urge you to contact them immediately to avoid disconnection if you feel you are eligible for aid.



**NORTHWEST COMMUNITY ACTION**  
PO Box 67  
Badger, MN 56714-0067  
(218) 528-3258 or 800-568-5329  
northwestcap.org

**TRI-VALLEY OPPORTUNITY COUNCIL, INC.**  
1407 Erskine Street  
Crookston, MN 56716  
(218) 281-9080 or Toll Free (866) 264-3729

**UNITED STATES POSTAL SERVICE® (All Periodicals Publications Except Requester Publications)**

**Statement of Ownership, Management, and Circulation**

Publication Title: PKM News  
Issue Date: 4-17-2023  
Frequency: 6  
Number of Issues Published Annually: 6  
Annual Subscription Price: \$10.00  
Publisher: PKM News  
Address: PO Box 108, 406 N. Minnesota Street, Warren, MN 56702-0108  
Phone: 218-745-4711  
Fax: 218-745-4711  
E-Mail: info@pkmnews.com  
Website: www.pkmnews.com  
Owner: PKM Electric Cooperative, Inc.  
Address: PO Box 108, Warren, MN 56702-0108  
Phone: 218-745-4711  
Fax: 218-745-4711  
E-Mail: info@pkmnews.com  
Website: www.pkmnews.com  
Manager: Daniel Schmidt  
Address: PO Box 108, Warren, MN 56702-0108  
Phone: 218-745-4711  
Fax: 218-745-4711  
E-Mail: info@pkmnews.com  
Website: www.pkmnews.com  
Circulation: 108  
Address: PO Box 108, 406 N. Minnesota Street, Warren, MN 56702-0108  
Phone: 218-745-4711  
Fax: 218-745-4711  
E-Mail: info@pkmnews.com  
Website: www.pkmnews.com  
Full Name: National Rural Utilities Cooperative Finance Corp (NCRFC)  
Address: 2700 Cooperative Way, Herndon, VA 20171-4894  
Phone: 703-441-1111  
Fax: 703-441-1111  
E-Mail: info@ncrfc.com  
Website: www.ncrfc.com  
Circulation: 108  
Address: 5500 S Quebec St, Greenwood Village, CO 80111-1914  
Phone: 303-751-1111  
Fax: 303-751-1111  
E-Mail: info@ncrfc.com  
Website: www.ncrfc.com

**UNITED STATES POSTAL SERVICE® (All Periodicals Publications Except Requester Publications)**

**Statement of Ownership, Management, and Circulation**

Publication Title: PKM NEWS  
Issue Date: July-August 2023  
Frequency: 2  
Number of Issues Published Annually: 2  
Annual Subscription Price: \$10.00  
Publisher: PKM NEWS  
Address: PO Box 108, 406 N. Minnesota Street, Warren, MN 56702-0108  
Phone: 218-745-4711  
Fax: 218-745-4711  
E-Mail: info@pkmnews.com  
Website: www.pkmnews.com  
Owner: PKM Electric Cooperative, Inc.  
Address: PO Box 108, Warren, MN 56702-0108  
Phone: 218-745-4711  
Fax: 218-745-4711  
E-Mail: info@pkmnews.com  
Website: www.pkmnews.com  
Manager: Daniel Schmidt  
Address: PO Box 108, Warren, MN 56702-0108  
Phone: 218-745-4711  
Fax: 218-745-4711  
E-Mail: info@pkmnews.com  
Website: www.pkmnews.com  
Circulation: 108  
Address: PO Box 108, 406 N. Minnesota Street, Warren, MN 56702-0108  
Phone: 218-745-4711  
Fax: 218-745-4711  
E-Mail: info@pkmnews.com  
Website: www.pkmnews.com  
Full Name: National Rural Utilities Cooperative Finance Corp (NCRFC)  
Address: 2700 Cooperative Way, Herndon, VA 20171-4894  
Phone: 703-441-1111  
Fax: 703-441-1111  
E-Mail: info@ncrfc.com  
Website: www.ncrfc.com  
Circulation: 108  
Address: 5500 S Quebec St, Greenwood Village, CO 80111-1914  
Phone: 303-751-1111  
Fax: 303-751-1111  
E-Mail: info@ncrfc.com  
Website: www.ncrfc.com

**UNITED STATES POSTAL SERVICE® (All Periodicals Publications Except Requester Publications)**

**Statement of Ownership, Management, and Circulation**

Publication Title: PKM NEWS  
Issue Date: 9-22-23  
Frequency: 2  
Number of Issues Published Annually: 2  
Annual Subscription Price: \$10.00  
Publisher: PKM NEWS  
Address: PO Box 108, 406 N. Minnesota Street, Warren, MN 56702-0108  
Phone: 218-745-4711  
Fax: 218-745-4711  
E-Mail: info@pkmnews.com  
Website: www.pkmnews.com  
Owner: PKM Electric Cooperative, Inc.  
Address: PO Box 108, Warren, MN 56702-0108  
Phone: 218-745-4711  
Fax: 218-745-4711  
E-Mail: info@pkmnews.com  
Website: www.pkmnews.com  
Manager: Daniel Schmidt  
Address: PO Box 108, Warren, MN 56702-0108  
Phone: 218-745-4711  
Fax: 218-745-4711  
E-Mail: info@pkmnews.com  
Website: www.pkmnews.com  
Circulation: 108  
Address: PO Box 108, 406 N. Minnesota Street, Warren, MN 56702-0108  
Phone: 218-745-4711  
Fax: 218-745-4711  
E-Mail: info@pkmnews.com  
Website: www.pkmnews.com  
Full Name: National Rural Utilities Cooperative Finance Corp (NCRFC)  
Address: 2700 Cooperative Way, Herndon, VA 20171-4894  
Phone: 703-441-1111  
Fax: 703-441-1111  
E-Mail: info@ncrfc.com  
Website: www.ncrfc.com  
Circulation: 108  
Address: 5500 S Quebec St, Greenwood Village, CO 80111-1914  
Phone: 303-751-1111  
Fax: 303-751-1111  
E-Mail: info@ncrfc.com  
Website: www.ncrfc.com



## ELECTRICAL CONTRACTOR

# CONTINUING EDUCATION COURSES

Learn more at [Minnkota.com](http://Minnkota.com)

## JANUARY 2024

**January 10 or  
January 11, 2024**  
Fargo, ND  
Fargo Holiday Inn

**January 18,  
2024**  
Bemidji, MN  
Bemidji Eagles Club

**January 23,  
2024**  
Fergus Falls, MN  
Bigwood Event Center

**January 30 or  
January 31, 2024**  
Grand Forks, ND  
Minnkota Power Cooperative

**\$80 REGISTRATION FEE | EIGHT CODE CREDITS**

## Co-op PIE DAYS! Month



### *Warren Pie Day Gift Winners*

**Ron Leverington** – PKM Goodie Bag  
**John Hess** – PKM Goodie Bag  
**Linda Johnson** – \$50.00 Gift Card  
**Dean Holmstrom** – Dewalt Impact Drill

.....

### *Hallock Pie Day Gift Winners*

**Marlene Aasand** – PKM Goodie Bag  
**Troy Vagle** – PKM Goodie Bag  
**Diane Peterson** – \$50.00 Gift Card  
**Cheryl Muir** – Blender  
**Britt Slusar** – Dewalt Shop Vacuum