



# PKM NEWS

Electric Cooperative September/October 2016



## THE COOPERATIVE DIFFERENCE

Every October since 1930, not-for-profit cooperatives of all stripes have celebrated Cooperative Month. During this time, it makes sense to highlight the qualities that make electric cooperatives different from other types of utilities and businesses.

For starters, electric co-ops are owned by those they serve. That's why those who receive electric service from us are called members, not customers. Without members, there would be no PKM Electric Cooperative, Inc.

Members maintain democratic control of our co-op, which means they elect fellow members to represent them on the board of directors/trustees at our annual meeting. As a bonus, co-op members receive special benefits through programs like our interest free electric heating and/or appliance loans, off-peak, PowerSavers rebates and Operation Round Up®. We also return margins ("profits") to our members in the form of capital credits.

One principle that sets us apart from other businesses is our concern for community. As a cooperative, we have a special responsibility to support the areas in which our members live and work. From sponsoring a local school's baseball team to supporting new jobs and industry through our economic development efforts, we stand as a driving force in our community.

Of course, co-ops span all industries, including credit unions, dairy operations, health care, housing and much more. There are more than 29,000 co-ops across the nation. And not all are small or rural. Just look at nationally known co-ops like Sunkist, Ace Hardware and Land O' Lakes.

Overall, co-ops are more accessible than other types of businesses. We give our members a voice, and we are local – living and working alongside those we serve.

*That's the cooperative difference.*

### COOPERATIVES ARE:

VOLUNTARY • DEMOCRATIC • EQUITABLE • INDEPENDENT • INFORMATIVE • COLLABORATIVE • COMMUNITY

D.C. Circuit Court hears Clean Power Plan case - page 3

LED Christmas lights and decorations rebate - page 6

Energy assistance program information - page 8

Cooperative Month coloring contest - page 9



# Cooperative Month

## CHARLES RIESEN

Manager

PKM Electric Cooperative

Co-op month has been celebrated annually in October across the United States for more than half a century. Contrary to rumors, no I have not been here that long. Today's cooperatives trace their origins to England's Industrial

Revolution. But until the founding of the Rochdale Equitable Society in 1844, none were successful. In our young country, Benjamin Franklin formed the first mutual insurance company in Philadelphia. Later in life he would propose life insurance and crop insurance based on the mutual concept.

Today more than 40,000 cooperatives dot our nation representing businesses as varied as credit unions to health care and most in between. Minnesota was one of the first states to enact a law authorizing cooperatives in the nation, including three Fortune 500 companies and eight of the largest 100 cooperatives in the United States. The "glue" that binds

cooperatives together to this day is the seven cooperative principles that will close in on their bicentennial in 2044. As relevant today as they were in 1844, these principles are:

- 1) **Voluntary and Open Membership**
- 2) **Democratic Member Control**
- 3) **Members' Economic Participation**
- 4) **Autonomy and Independence**
- 5) **Education, Training and Information**
- 6) **Cooperation Among Cooperatives**
- 7) **Concern for Community**

PKM is proud of the small part it plays in furthering cooperative principles in our part of Minnesota.



[www.call811.com](http://www.call811.com)

Remember to always call 811 before you dig at least 48 hours before starting your project to have underground public power lines marked for free. Private lines are the homeowner's responsibility, so please call your local electrician.

## Electrical Inspectors

### Marshall County & Kittson County

Scott Stenvik  
16409 State Hwy 1 N.W.  
Thief River Falls, MN 56701  
218-689-5406

### Polk County

Bryan Holmes  
218-686-1413

## CO-OP MONTH | OCTOBER 2016

### CO-OP MONTH FUN FACTS

- Minnesota was the first state to declare an official Co-op Month proclamation in 1948.
- Co-op Month has been a nationally recognized celebration since 1964, when U.S. Secretary of Agriculture Orville Freeman, a former Minnesota governor, proclaimed October Co-op Month.
- The first national theme in 1964 was "Cooperatives: USDA Helps Build a Better America."
- The U.S. Government sponsored Co-op Month from 1964-70.
- Since 1971, cooperatives, statewide associations and the National Cooperative Business Association have fueled their own events and promotions.

### September/October 2016

The PKM News (USPS 417060) Vol. 70, No. 5 is published six times a year, February, April, June, August, October and December by PKM Electric Cooperative, Inc., 406 N. Minnesota, Warren, MN 56762. Periodicals postage paid at Warren, MN. Subscription 25¢/year for members \$2.50/year for non-members. POSTMASTER: Send address changes to PKM Electric Cooperative, Inc., P.O. Box 108, Warren, MN 56762-0108.

### Office hours:

8 a.m. to 4:30 p.m., Monday through Friday  
218-745-4711 or 800-552-7366

### Electrical after-hours emergencies

218-745-4711 or 800-552-7366  
e-mail: [infopkm@minnkota.com](mailto:infopkm@minnkota.com)  
website: [www.pkmcoop.com](http://www.pkmcoop.com)

### Next Board Meeting:

Tuesday, October 25, 2016

### Officers and Directors

President .....	Tom Woinarowicz
Vice President .....	Michael Beaudry
Secretary-Treasurer .....	Gordon Bernstrom
Directors .....	Paul Aakre, Jeffrey Folland, Steve Goodwin, Mark Hatton, Wayne Malm and Blake Owens
Manager .....	Charles Riesen
Editors .....	Deb Copp, Jeff Rustad, Chelsy Davey

## On the cover

Cooperatives such as PKM build communities. Co-op Month is a reminder of what we can do together.



# D.C. Circuit Court hears Clean Power Plan case

**T**he U.S. Court of Appeals for the D.C. Circuit heard seven hours of oral arguments Sept. 27 on the legality of the Environmental Protection Agency's Clean Power Plan.

Minnkota Power Cooperative, our wholesale power provider, is a named petitioner in the case, joining with 27 states and several utility and industry groups to challenge the rule – the first-ever federal regulation of carbon dioxide (CO<sub>2</sub>) emissions from power plants.

The 10-judge panel heard a wide range of constitutional, statutory and procedural arguments about the rule. Implementation of the Clean Power Plan has been suspended by the U.S. Supreme Court until all legal challenges have been resolved.

Under the rule, each state has a specific CO<sub>2</sub> reduction target that must be met by 2030. North Dakota, where all of Minnkota's electric generation resources are located, has one of the most stringent requirements in the nation. The state is required under the rule to reduce its CO<sub>2</sub> emissions rate 45 percent by 2030.

The central arguments of the case can be summarized in the following points:

- The Clean Power Plan is transformative because it does not aim to make a single emission source operate better, but instead aims to transform the entire energy

sector. EPA does not have the authority to require generation shifting in establishing the best system of emission reduction.

- EPA has not properly interpreted the Clean Air Act and the agency cannot regulate power plants under multiple sections of the Act.
- EPA is violating states' rights. Forcing a federal implementation plan if states do not implement a state compliance plan constitutes impermissible commandeering, as well as a violation of separation of powers.
- EPA did not provide adequate notice between the proposal and final rule. In North Dakota's case, the proposed rule required an 11 percent rate-based CO<sub>2</sub> reduction, while the final rule required a 45 percent reduction. EPA should have opened the rule back up for comment.
- EPA has not demonstrated that the Clean Power Plan rates are achievable.

A decision is not expected until early 2017. Regardless of the outcome, the case will likely be appealed to the U.S. Supreme Court thereafter for a final ruling. Legal experts predict that the final court decision on the Clean Power Plan may not come until mid-2018.



# Hunting electrical equipment is never in season

## SOME HUNTING TIPS

- Do not shoot at or near power lines or insulators.
- Familiarize yourself with the location of power lines and equipment on land where you shoot.
- Damage to the conductor can happen, possibly dropping a phase on the ground. If it's dry and the electricity goes to ground, there is the possibility of electrocution and fire.
- Be especially careful in wooded areas where power lines may not be as visible.
- Do not use power line wood poles or towers to support equipment used in your shooting activity.
- Take notice of warning signs and keep clear of electrical equipment.
- Do not place deer stands on utility poles or climb poles. Energized lines and equipment on the poles can conduct electricity to anyone who comes in contact with them, causing shock or electrocution.
- Do not shoot at, or near, birds perching on utility lines. That goes for any type of firearm, including pistols, rifles or shotguns.
- Do not place decoys on power lines or other utility equipment. Anything attached to a pole besides utility equipment can pose an obstruction – and a serious hazard – to electric cooperative employees as they perform utility operations.

**A**s fall approaches, along with various Minnesota hunting seasons, please remember that electrical insulators, conductors and electrical equipment are NOT on the hunting season list.

PKM Electric Cooperative encourages hunters to be aware of electrical equipment while enjoying the great outdoors this season. Be aware of what's behind that big buck or it might cost big bucks. Repairs can be costly in both equipment and outages to our members. As a nonprofit cooperative, owned by the members, we all share in this expense.

This doesn't include the inconvenience, damages and hazards to members down the line who require power for medical equipment or other needs while a

line worker does some hunting of his own looking at spans of line trying to locate the problem.

Hunters and other gun owners should not shoot near or toward power lines, power poles and substations. A stray bullet can cause damage to equipment, could be deadly to the shooter, and potentially interrupt electric service to large areas.

Sometimes the damage isn't noticed for several weeks or months, and is only discovered when an unexplained outage occurs.

Landowners are also

encouraged to take note of nonmembers who are hunting on their property, and remind them to be aware of power lines.

We recognize the majority of hunters practice safe hunting and understand the potential risks when discharging a firearm. We encourage experienced hunters who are familiar with the area to identify the locations of utility properties and equipment to young or new hunters in their group and remind them to avoid shooting toward these facilities. Enjoy the great outdoors. Just be sure to hunt only what's in season.

# Don't be fooled by common ENERGY MYTHS



Eating carrots will greatly improve your eyesight, cracking your knuckles leads to arthritis, watching too much TV will harm your vision. We've all heard the old wives' tales, but did you know there are also many misconceptions about home energy use? Don't be fooled by common energy myths.

## Myth #1: The higher the thermostat setting, the faster the home will heat (or cool).

Many people think walking into a chilly room and raising the thermostat to 85 degrees will heat the room more quickly. This is not true. Thermostats direct a home's HVAC system to heat or cool to a certain temperature. Drastically adjusting the thermostat setting will not make a difference in how quickly you feel warmer. The same is true for cooling. The Department of Energy recommends setting your thermostat to 78 degrees during summer months, and 68 degrees during winter months.

## Myth #2: Opening the oven door to check on a dish doesn't really waste energy.

While it can be tempting to check the progress of that dish you're cooking in the oven, opening the oven door does waste energy. Every time the oven door is opened, the temperature inside is reduced by as much as 25 degrees, delaying the progress of your dish and, more importantly, costing you additional money. If you need to check the progress of a dish, try using the oven light instead.

## Myth #3: Ceiling fans keep your home cool while you're away.

Ceiling fans cool people, not rooms. Ceiling fans circulate room air but do not change the temperature. A running ceiling fan in an empty room is only adding to your electricity use. Remember to turn fans off when you're away and reduce your energy use.

## Myth #4: Reducing my energy use is too expensive.

Many consumers believe reducing energy use requires expensive upfront costs, like purchasing new, more efficient appliances or construction upgrades to an older home. But the truth is, consumers who make small changes to their energy efficiency habits, such as turning off lights when not in use, sealing air leaks and using a programmable thermostat, can see a reduction in energy consumption.

Remember, energy efficiency doesn't have to be difficult. Focus on small changes to save big.  
Learn more about ways to save energy by visiting [www.pkmcoop.com](http://www.pkmcoop.com) or calling 218-745-4711.

## New website highlights value of electricity

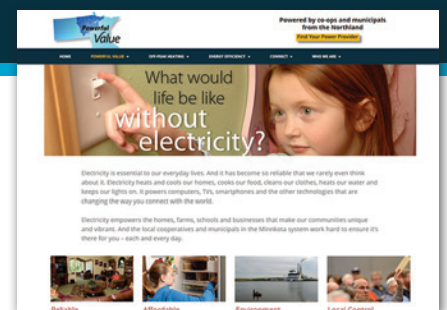
A new website launched by Minnkota Power Cooperative, PKM Electric Cooperative's wholesale power provider, highlights the value of electricity, the benefits of off-peak electric heating and how to use electricity wisely.

The website, [www.ValueofElectricity.com](http://www.ValueofElectricity.com), primarily focuses on how electricity is essential to our everyday lives. It encourages consumers to remember that electricity heats and cools our homes, cooks our food, cleans our clothes, heats our water and keeps our lights on. Electricity is also

changing the way we connect with the world through computers, TVs, smartphones and the other technologies.

Other areas of the website include detailed heating system profiles, energy efficiency tips, calculators and information that is specifically designed for energy users in northern climates. It also serves as a resource for the most recent news and updates on energy-efficient technologies.

The site debuts a new series, entitled "Real People. Real Power." This series includes stories and videos



that take you beyond the outlet to learn about the families, farmers, business owners and others who benefit from reliable electricity in new and unique ways.

Check out [ValueofElectricity.com](http://ValueofElectricity.com) today to learn how you can get more for your energy dollar.

# Take note of power poles when planning a controlled burn



Properly controlled burns can have many benefits for agricultural land. However, if these burns are not managed safely, they can result in property damage, power outages, injury and even death. Safe Electricity urges you to make safety

a priority and shares important information on the special considerations that need to be taken around power lines.

First, make yourself aware of laws and regulations. Burns should only be conducted by those who are experienced with fire and burn paths. Avoid burning near public roads or airports, as this can create a potentially dangerous visibility hazard. Alert all those who may be potentially affected by the burn – including neighbors, the local fire department and law enforcement. Depending on local regulations, you may also need to obtain a burn permit.

Take special note of power poles and lines. Burning a power pole could result in a widespread power outage and be costly for the individual responsible for the fire.

Cut down grass and weeds and water the area near the poles as to not encourage fires to encroach. Be careful to keep water streams out of power lines.

If a power pole catches on fire, call the fire department and alert your utility to handle the possible electrical dangers. Even if you think you have been able to put out the fire yourself, alert the utility to the fact that it caught fire. The creosote, a preservative on the inside, could still be burning the pole from the inside out. In addition, if the pole catches on fire, it could create shock or electrocution hazards to those who may be nearby, or spark fires in unintended directions from downed lines.

Carbon particles in smoke can conduct electricity, and it is also possible for smoke produced during the burnings to conduct electricity and cause an electrical discharge from the line. To reduce this risk, the fire should not cross under power lines.

Also keep environmental factors, such as temperature, humidity and wind direction and speed in mind. The wind speed in the area should be low and in a steady direction as to not let the fire get out of control. As environmental factors are subject to change, check forecasts as well as actual conditions before you begin the burn.

Ensure that you have the proper clothing, equipment and tools. For personal safety, all those near the flames should wear clothing made of natural fibers or approved for firefighting. For more information on safety around electrical equipment, visit [SafeElectricity.org](http://SafeElectricity.org).

## 4 WAYS TO PAY

**1 IN PERSON**  
Located in Warren, Minn., at 406 North Minnesota St. or utilize our drop box outside the building during nonbusiness hours.

**2 ACH (Automated Clearing House)**  
A monthly bank draft directly from your checking account taken on the 10<sup>th</sup> of every month.

**3 SMARTHUB**  
Convenient account access where you can manage payments, check your usage and receive emails from PKM when your bill has been calculated.

**4 BY MAIL**  
Send the payment in the envelope provided with your monthly statement to PKM Electric, Inc., P.O. Box 108, Warren, MN 56762.

# Celebrate with savings

## Buy energy efficient Christmas lights and decorations

# LED Rebate

**How to apply:**

- Purchase LED Christmas plug-in (not battery operated) lights and decorations in 2016.
- Complete this rebate form and submit it to PKM Electric Cooperative by Dec. 31, 2016, with a copy of your sales receipt and the packaging showing the number of lights per string. ENERGY STAR® LEDs recommended.
- Select appropriate rebate in the box below. Rebate cannot exceed 75 percent of cost. Maximum of 5 strings per customer.

Name \_\_\_\_\_ City/Zip \_\_\_\_\_  
 Account # \_\_\_\_\_ Phone # \_\_\_\_\_  
 Address \_\_\_\_\_

Number of Strings	Rebate per String	Total Rebate
Less than 99 lights	\$ 3	
100-199 lights	\$ 6	
200-299 lights	\$ 9	
Greater than 300 lights	\$12	

**Mail to: PKM Electric Cooperative • 406 N. Minnesota • Warren, MN 56762**

# AUTHORIZATION FOR ACH (AUTOMATED DIRECT PAYMENT)

STAPLE VOIDED CHECK HERE

I authorize \_\_\_\_\_ and the financial institution named  
(COMPANY NAME)

below to initiate electronic entries from my checking/savings account. This authority will remain in effect until I notify you in writing to cancel it in such time as to afford the financial institution a reasonable opportunity to act on it. I can stop payment of any entry by notifying my financial institution 3 days before my account is charged.

(NAME OF FINANCIAL INSTITUTION)

(BRANCH)

(CITY)

(STATE)

(ZIP CODE)

(SIGNATURE)

(DATE)

(NAME- PLEASE PRINT)

(ADDRESS- PLEASE PRINT)

Account Number \_\_\_\_\_

Checking

Savings

Financial Institution Routing Number \_\_\_\_\_

|

|

## Electric Heating or Appliance

**\$100 - \$1,500**  
12 or 24  
month term

O1

**\$1,501 - \$3,000**  
12, 24, 36 or 48  
month term

O2

## LOAN OPTIONS

**PKM Electric Cooperative, Inc.** offers an interest free loan program to member/owners of the cooperative.

To qualify, certain conditions must be met.

For more information on the loan program and general conditions, please contact us at **218.745.4711**

or visit our website  
**www.pkmcoop.com.**

*Loan origination fee:  
2.5% or \$25.00 per \$1,000  
\$10.00 minimum*

**\$100 - \$5,000**  
(security systems)

O4

O3

**\$100 - \$6,000**  
12, 24, 36, 48, 60, or 72  
month term

## *Northwest Community Action Inc.*

# Energy Assistance Program

**Oct. 1, 2016—May 31, 2017**

**To request an application form:**

**Write**

Northwest Community Action, Inc.  
312 North Main Street  
PO Box 67  
Badger, MN 56714

**Call**

Phone: 218-528-3258  
Toll-Free: 800-568-5329

**Visit our Website**

[www.northwestcap.org](http://www.northwestcap.org)

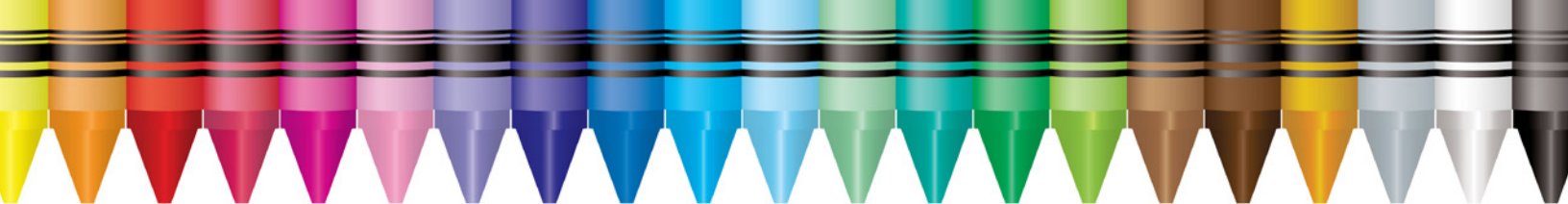
### **INCOME GUIDELINES**

<b>Family Size</b>	<b>3-Month Gross Income</b>	<b>Yearly Gross Income</b>
1	\$6,135	\$24,541
2	\$8,023	\$32,092
3	\$9,910	\$39,643
4	\$11,798	\$47,194
5	\$13,686	\$54,745
6	\$15,574	\$62,296

- Households may apply only once during our program year (Oct. 1, 2016—May 31, 2017).
- Both homeowners and renters may be eligible.
- Home visits are available for homebound applicants, upon request.
- Households requesting assistance in completing the application are encouraged to phone our office to set up an appointment.
- Households who received assistance under last year's program will automatically receive a new application form in the mail in September 2016.
- **You are responsible for your heating and electric bills until you hear from NWCA.**

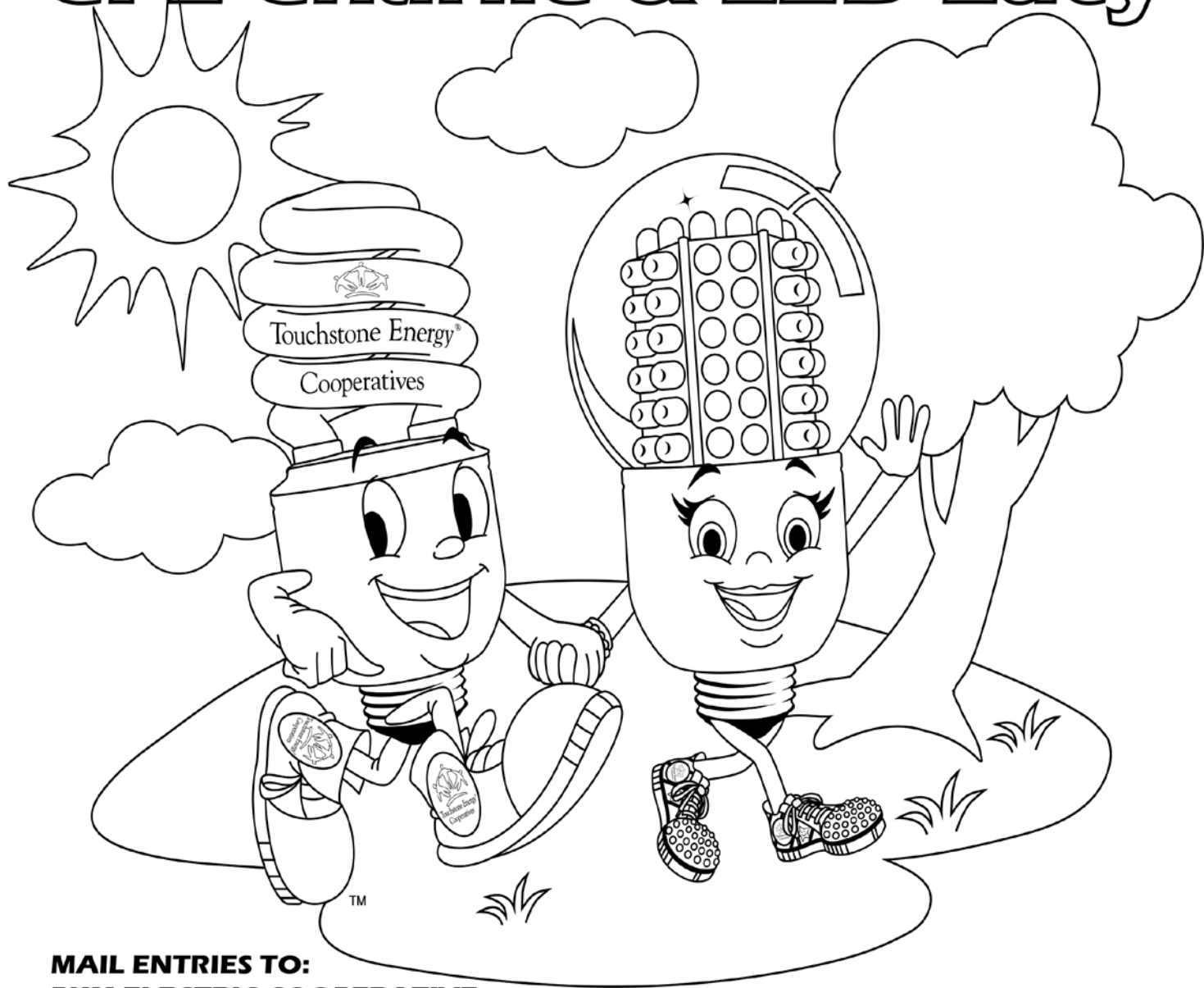
***The Energy Assistance Program is funded by the Minnesota Department of Commerce and the U.S. Department of Health & Human Services.***





# Cooperative Month Coloring Contest

## CFL Charlie & LED Lucy



**MAIL ENTRIES TO:**  
**PKM ELECTRIC COOPERATIVE**  
**PO BOX 108**  
**WARREN, MN 56762**

**Name:** \_\_\_\_\_  
**Age:** \_\_\_\_\_  
**Address:** \_\_\_\_\_  
\_\_\_\_\_  
\_\_\_\_\_  
**Phone #:** \_\_\_\_\_

**ENTRY DEADLINE:**  
**Must be postmarked by**  
**\*NOVEMBER 28, 2016**

**Winner will receive a**  
**KINDLE FIRE HD!**

**Must be 12 or younger to enter!**

# Board meeting highlights July and August

## A regular meeting of the board was held Tuesday, July 26, 2016.

President Tom Woinarowicz who presided, called the meeting to order. Upon calling the roll, the secretary reported that all directors with the exception of Jeff Folland were present.

President Woinarowicz reported on recent MREA activities, indicating that significant staff time is being spent on the "net metering" issue that has come under the PUC for dispute resolution.

The secretary/treasurer reported on a meeting of the Square Butte Electric Cooperative board of directors.

The manager of operations presented the monthly safety report, indicating no accidents and no lost-time. He further reported that annual truck inspections have been completed and Terex will return later in the year to make minor repairs.

The Department of Labor reviewed our apprenticeship program and all was in order except our ratio of journeymen to apprentices, which will rectify itself when Ben Pahlen and Nolan Knott become journeymen within the next six months.

Other members of the management staff and the manager presented their reports to the board of directors and responded to their questions.

The manager and the assistant manager reviewed with the board of directors the 2<sup>nd</sup> quarter financials of the cooperative. The manager and the assistant manager responded to questions. The board instructed management to file the financials for audit review. The manager reviewed with the board of directors the 2<sup>nd</sup> quarter subsidiary financials.

The manager reviewed with the board of directors the executive summary of CFC key ratios. The manager stated that a complete list of ratios is available for directors who wish to review all the ratios with several requesting copies.

The CFC Integrity Fund was removed from the table and discussed by the board of directors.

The board noted that the cooperative is applying to the Cooperative System Integrity Fund for assistance in our efforts to resist an attempt by Otter Tail Power Company to obtain an Enbridge Pipeline account located in our service area. We have developed a detailed estimate of expenditures for efforts to resist this threat in the amount of \$50,000 and it was requested that PKM be granted assistance from the Integrity Fund in the amount of \$25,000.

The manager stated it would be necessary to select voting delegates for the various organizations in which the cooperative has membership in for 2016-2017. The board declared that voting delegates for 2016-2017 remain the same as the previous year.

Organization	Delegate	Alternate
NRECA	Gordon Bernstrom	Jeff Folland
MREA	Gordon Bernstrom	Tom Woinarowicz
CFC	Mike Beaudry	Gordon Bernstrom
NRTC	Blake Owens	Mike Beaudry
FEDERATED	Blake Owens	Tom Woinarowicz
CO-BANK	Jeff Folland	Gordon Bernstrom
COOPERATIVE NETWORK	Gordon Bernstrom	Tom Woinarowicz
RESCO	Gordon Bernstrom	Wayne Malm

The manager presented to the board of directors Policy Bulletin No. 1-3.4 and mentioned that it was a draft as instructed by the president. The items intended to be deleted are in red and to be supplanted with the yellow highlighted items. During discussion it was determined that the draft policy presented to the board of directors is what they were looking for. The board reviewed and discussed Policy Bulletin 1-3.4. "Non-Union Paid Time Off (PTO)" and approved the policy to become effective Sept. 1, 2016.

The board committee discussed with the board of directors a meeting with a board committee and staff of Cavalier REC. The directors mentioned that the meeting was held at the Hallock Service Center and that the meeting was cordial and the next move would be for the respective cooperative staff to discuss items in more detail and determine if a mutual advantageous agreement can be reached.

The wage and salary committee met with the assistant manager for the purpose of nonbargaining wages and wage recommendations were essentially in line

with neighboring cooperatives. The nonbargaining wages presented to the board were approved to become effective July 1, 2016.

## A regular meeting of the board was held Tuesday, Aug. 30, 2016.

Tom Woinarowicz, president who presided, called the meeting to order. Upon calling the roll, the secretary reported that all directors with the exception of Jeff Folland were present.

The president reported on recent MREA activities, indicating that a small dues increase was necessary for 2017 and that MREA has a small building project to house job training and safety equipment and supplies.

In absence of Director Folland, the manager reported on Minnkota activities, briefing the directors on Project Tundra, the Clean Power Plan, progress of the new campus and continuing discussions with Basin Electric Cooperative.

The secretary-treasurer presented a brief report on Square Butte Electric Cooperative activities.

Directors Aakre and Hatton reported on their attendance to the MREA New Director Orientation and referenced the wealth of good information and the realization that power supply and distribution in the coming years is very serious business indeed.

Director Bernstrom reported on his attendance to the Energy Issues Summit and the manager stated that he attended the Legislative meeting prior to the Summit and distributed the checks during the fundraiser.

The president determined that since several directors would need to leave the board meeting early that he would



## PKM ELECTRIC COOPERATIVE POLITICAL LEADERS

### Federal legislators

#### President Barack Obama

The White House  
1600 Pennsylvania Ave. NW  
Washington, D.C. 20500  
www.whitehouse.gov  
president@whitehouse.gov  
202-456-1111

#### Senator Al Franken

320 Hart Senate Office Building  
Washington, D.C. 20510  
www.alfranken.com

202-224-5641  
Fax: 202-224-0044

#### Senator Amy Klobuchar

302 Hart Senate Office Building  
Washington, D.C. 20510  
www.klobuchar.senate.gov  
202-224-3244  
1-888-224-9043 (Minnesota office)  
Fax: 202-228-2186

#### Congressman Collin Peterson

2109 Rayburn House Office Building  
Washington, D.C. 20515

www.collinpeterson.house.gov  
202-225-2165  
Fax: 202-225-1593

### State of Minnesota legislators

#### Governor Mark Dayton

75 Rev. Dr. Martin  
Luther King Jr. Blvd.  
Capitol Building, Room 130  
St. Paul, MN 55155-1606  
800-657-3717  
mark.dayton@state.mn.us

#### Senator LeRoy Stumpf

75 Rev. Dr. Martin  
Luther King Jr. Blvd.  
Capitol Building, Room 122  
St. Paul, MN 55155-1606  
651-296-8660  
Email: Use mail form

#### Representative Dan Fabian

307 State Office Building  
100 Rev. Dr. Martin  
Luther King Jr. Blvd.  
St. Paul, MN 55155  
651-296-9635

888-727-0979  
rep.dan.fabian@house.mn

#### Representative Deb Kiel

337 State Office Building  
100 Rev. Dr. Martin  
Luther King Jr. Blvd.  
St. Paul, MN 55155  
651-296-5091  
800-339-9041  
rep.deb.kiel@house.mn

# Trading Post

## For Sale

2000 (26 ft.) Four Winds 5<sup>th</sup> wheel camper, 1 slide out and awning. Excellent condition. Call 701-740-4250.

1-upright freezer in good working order, 1-scroll saw for wood working, new, a generator like new and a 308 deer rifle. Call 218-754-2331.

2006 Winnebago Tour Motor home, 40 ft., 350 hp Cat diesel engine, 3 slide outs, king bed, exterior entertainment center, 4-door refrigerator, dishwasher, convection/microwave oven, 44,500 miles, \$78,500. Call 218-224-3251, Laporte, Minn.

## Rules

Ads for PKM members only. Limit your ads to two items. No commercial ads. Submit ads by the 18<sup>th</sup> of Jan., March, May, July, Sept. and Nov.

start with the business agenda and leave the staff reports for the end of the meeting.

The manager reviewed with the board five-year loss history from their insurer Federated Rural Electric Insurance Exchange, which detailed dramatic improvement in the cooperative's loss ratios since 2011. The manager credited the entire organization for this improvement, primarily the employees, but also mentioned that the board of directors and management are to be commended for providing the resources necessary to achieve this enviable safety record. Of course, the proof to whether we have been successful will be dependent upon continual improvement and adherence to safety. The manager did stress that we are off to an excellent start and its continuation is a priority.

The president mentioned that he is still receiving questions from the auditor on Policy Bulletin 1-3.4. There is a board committee that will review personnel policies later in 2016 and the outstanding issues will still want to be addressed.

The manager of operations presented the monthly safety report, indicating no accidents and no lost-time. He detailed safety meetings from MREA and Minnesota Safety.

Members of the management staff presented their monthly reports. The manager presented his report to the board of directors and briefly discussed a visit to Cavalier Rural Electric Cooperative.

# Statistical and financial report

## Year-to-date: August 2016

	Last Year	This Year	Budget
Total income	\$ 8,563,570	\$ 9,175,746	\$ 9,410,000
Total expense	\$ 8,788,045	\$ 8,953,105	\$ 8,744,300
Net margins	\$ (224,475)	\$ 222,641	\$ 665,700
Total kWh sold	76,694,365	76,016,765	76,300,000
Avg. kWh sold per member	2,548	2,535	
Delivery cost per kWh purchased	7.91¢	8.15¢	
Avg. sale price per kWh	11.16¢	12.07¢	
Percent kWh sales increase	(11.5%)	(.88%)	
Members billed	3,765	3,778	
Miles of line in service	2,261	2,261	
175 watt MV lights	1,463	1,433	
400 watt MV lights	93	89	
100 watt H.P.S.	884	867	
250 watt H.P.S.	87	85	
<b>Outage charged to:</b>	<b>2016</b>	<b>2015</b>	<b>2014</b>
Minnkota operations	5,126.15	3,427.67	3,979.80
PKM operations	3,695.51	3,516.67	4,960.92
Total	8,821.66	6,944.34	8,940.72

Minutes per member PKM operations year to date: 58.69

Minutes per member Minnkota operations year to date: 81.41

The manager stated that he planned to attend the MREA Legislative Conference in Washington, D.C., and the return date is Sept. 28, 2016. The manager stated that the next board meeting date falls during the date of the Legislative Conference.

Directors caucused and determined that the September meeting of the board of directors will be a special meeting to be held Sept. 29, 2016, at 8 a.m., at the headquarters of the cooperative.

### UNITED STATES POSTAL SERVICE® (All Periodicals Publications Except Requester Publications)

1. Publication Title: PKM NEWS  
 2. Publication Number: 417-060  
 3. Filing Date: 9-13-2016  
 4. Issue Frequency: Six Times Year  
 5. Complete Mailing Address of Known Office of Publication (Not printer): PO Box 108 406 N Minnesota Street Warren Marshall MN 56762-0108  
 6. Complete Mailing Address of Headquarters or General Business Office of Publisher (Not printer): PO Box 108 Warren MN 56762-0108  
 7. Full Names and Complete Mailing Addresses of Publisher, Editor, and Managing Editor: PKM Electric Cooperative Inc. PO Box 108 Warren MN 56762-0108  
 8. Owner: Deb Cogg PO Box 108 Warren MN 56762-0108  
 9. Publication Title: PKM NEWS  
 10. Issue Frequency: Six Times Year  
 11. Complete Mailing Address of Known Office of Publication (Not printer): PO Box 108 406 N Minnesota Street Warren Marshall MN 56762-0108  
 12. Complete Mailing Address of Headquarters or General Business Office of Publisher (Not printer): PO Box 108 Warren MN 56762-0108  
 13. Full Names and Complete Mailing Addresses of Publisher, Editor, and Managing Editor: PKM Electric Cooperative Inc. PO Box 108 Warren MN 56762-0108  
 14. Owner: Deb Cogg PO Box 108 Warren MN 56762-0108  
 15. Publication Title: PKM NEWS  
 16. Issue Frequency: Six Times Year  
 17. Complete Mailing Address of Known Office of Publication (Not printer): PO Box 108 406 N Minnesota Street Warren Marshall MN 56762-0108  
 18. Complete Mailing Address of Headquarters or General Business Office of Publisher (Not printer): PO Box 108 Warren MN 56762-0108  
 19. Full Names and Complete Mailing Addresses of Publisher, Editor, and Managing Editor: PKM Electric Cooperative Inc. PO Box 108 Warren MN 56762-0108  
 20. Owner: Deb Cogg PO Box 108 Warren MN 56762-0108

### Statement of Ownership, Management, and Circulation

13. Publication Title: PKM NEWS  
 14. Issue Date for Circulation Data Below: July/August 2016  
 15. Extent and Nature of Circulation: Newsletter  
 a. Total Number of Copies (Net press run): 2797  
 b. Paid Circulation (By Mail and Outside the Mail): 1517  
 c. Paid Distribution Outside the Mail (Carriers, Street Vendors, Counter Sales, and Other Paid Distribution Outside USPS®): 1195  
 d. Paid Distribution by Other Classes of Mail Through the USPS (e.g., First-Class Mail®): 1204  
 e. Total Paid Distribution (Sum of 15b, 15c, 15d, and 15e): 2712  
 f. Free or Nominal Rate Distribution (By Mail and Outside the Mail): 75  
 g. Free or Nominal Rate Distribution Outside the Mail (Carriers or other means): 75  
 h. Total Free or Nominal Rate Distribution (Sum of 15f, 15g, 15h, and 15i): 150  
 i. Total Distribution (Sum of 15e and 15i): 2797  
 j. Copies Not Distributed (See Instructions to Publishers #4 page 8): 10  
 k. Total (Sum of 15j and g): 2797  
 l. Paid Paid (15e divided by 15i times 100): 97

### UNITED STATES POSTAL SERVICE® (All Periodicals Publications Except Requester Publications)

16. Electronic Copy Circulation: a. Paid Electronic Copies: 1517  
 b. Total Paid Print Copies (Line 15c) + Paid Electronic Copies (Line 16a): 1517  
 c. Total Print Distribution (Line 15d) + Paid Electronic Copies (Line 16a): 1204  
 d. Percent Paid (Both Print & Electronic Copies) (16a divided by 15e x 100): 97  
 17. Publication of Statement of Ownership: X The publication is a general publication, publication of this statement is required. PSB be printed in the September/October 2016 issue of this publication.  
 18. Signature and Title of Editor, Publisher, Business Manager, or Owner: [Signature] Manager Services Manager  
 Date: 9-13-16  
 I certify that all information furnished on this form is true and complete. I understand that anyone who furnishes false or misleading information on this form or who omits material or information requested on the form may be subject to criminal sanctions (including fines and imprisonment) and/or civil sanctions (including civil penalties).



## SMART ENERGY USE

with help from PKM Electric Cooperative

### Heating and cooling system rebate checklist

*Must be on off-peak.*  
Combined heating and cooling rebate maximum of \$600.

#### Electric plenum heaters

Easily converts your existing fossil fuel furnace into a dual-fuel heating system. You are able to use the most efficient, cost-effective heating source – fossil fuel or electricity – at any time.

**Electric Heat rebate:** \$20 per kilowatt (kW), maximum of \$600

**PowerSavers rebate:** \$500 if installed with ENERGY STAR®-rated air-source heat pump. Must modulate to allow ASHP to operate down to 5 degrees F., and be on off-peak.



#### Electric thermal storage heaters

Draws electricity during off-peak hours when it is cheaper. Heat is stored in specially designed bricks to provide comfort 24 hours a day.

**Electric Heat rebate:** \$20 per kW, maximum of \$600

**PowerSavers rebate:** \$500 if installed with ENERGY STAR-rated air-source heat pump. Must modulate to allow ASHP to operate down to 5 degrees F., and be on off-peak.

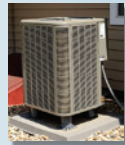


#### Air-source heat pumps (including mini-split ductless option)

Works just like a central air conditioner in the summer. In the fall and winter, they provide super-efficient supplemental heat.

**Electric Heat rebate:** \$100 per ton, maximum of \$600

**PowerSavers rebate:** \$400-500 depending on efficiency ratings

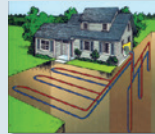


#### Geothermal heat pumps

Provides the highest efficiency for space heating and cooling available today. The system transfers heat to and from the earth using only small amounts of electricity.

**Electric Heat rebate:** \$200 per ton, maximum of \$600

**PowerSavers rebate:** Open loop, \$200 per ton, maximum of \$2,500. Closed loop, \$400 per ton, maximum of \$5,000. Must meet program efficiency requirements.



#### Underfloor electric heating

A popular off-peak option because the system transfers consistently across the floor to reach people and objects, providing both comfort and efficiency. Applications include electric boiler with hydronic tubing or electric cables or mats.

**Electric Heat rebate:** \$20 per kW, maximum of \$600



#### Other electric heating systems

Options include electric baseboard, cove heaters and more.

**Electric Heat rebate:** \$20 per kW, maximum of \$600



### Electric water heater rebate checklist

*Must be on off-peak*



- 100 gallon or greater

**Water heater rebate:** \$200  
**PowerSavers rebate:** \$150

- 56-99 gallon

**Water heater rebate:** \$150  
**PowerSavers rebate:** \$150

- 55 gallon or less

**Water heater rebate:** \$100

- Bonus rebates:**  
Add \$250 if converting from natural gas or propane.  
Add \$100 for new building construction.



### CFL and LED light bulb rebate checklist

*ENERGY STAR®-recommended.*  
Rebate up to dollar amount listed per bulb or 75% of the purchase price.



- Replace incandescent bulb with screw-in CFL

**PowerSavers rebate:** \$2 per bulb

- Replace incandescent bulb with screw-in LEDs

**PowerSavers rebate:** \$4 per bulb (40-60 watts)

**PowerSavers rebate:** \$8 per bulb (65 watts or greater)

**PowerSavers rebate:** \$8 per install of fixture/replacement kit

- Install LED outdoor fixtures (dusk-to-dawn operation required)

**PowerSavers rebate:** \$20 per fixture (40 watts and under)

**PowerSavers rebate:** \$40 per fixture (greater than 40 watts)

### Other ways to save on heating and cooling:

- Install a programmable thermostat. **PowerSavers rebate: \$25 per unit**
- Tune up your central air conditioner or air-source heat pump. **PowerSavers rebate: \$25 per unit**
- Seal air leaks. **PowerSavers rebate: 30% of sealing cost, maximum incentive \$300 (preblower and postblower tests required)**
- Insulate and air seal your attic. **PowerSavers rebate: 30% of sealing cost, max. \$500. (Must include air sealing. Improved from R-30 or less to R-50. Attic knee walls insulated to a minimum of R-25 up to R-30.)**
- Add wall insulation. **PowerSavers rebate: 30% of insulation cost, max. \$500. (Wall insulation improved from R-5 or less to R-11 or higher. Attic knee walls excluded.)**
- Install a furnace air handler with ECM blower. **PowerSavers rebate: \$100 per unit**