

National Farm Safety and Health Week

September 22-27, 2025



Harvest can be very demanding for all the farmers and ranchers in the region. Learn a few helpful tips to stay safe on *page 5*.



CEO Report

JEFF RUSTAD
CEO
PKM Electric Co-op

It's been a busy few months since you received the last PKM News. Your electric cooperative was tied up with storm repairs and chasing outages caused by wind, trees, equipment and dig-ins. During the most recent storm on Aug. 8, our first meters started reporting outages at 4:20 a.m. just north of East Grand Forks. At about 4:30 a.m., our Tabor substation lost a couple transmission poles, de-energizing the substation until about 12:30 p.m. that Friday. Tabor is one of our largest substations with around 800 accounts and affects members as far out as a few miles south of Warren. PKM had all hands on deck that morning, with outages scattered from the south end by Crookston to the Canadian border by Caribou. We did have a few broken poles, but most outages were caused by trees falling into the line. The linemen had almost every account on by 8 p.m. that night. Minnkota Power Cooperative (our wholesale power provider) lost 23 structures during this storm on the 345-kilovolt (kV) transmission line, along with damage to other lines like

the one feeding our Tabor substation. During the June 20 storm, Minnkota lost 33 structures on one of their 230-kV transmission lines, which is currently being reconstructed and should be done by the end of August.

After the June 20 storm, your electric cooperative sent crews to Red River Valley Co-op Power out of Halstad and Beltrami Electric Cooperative in Bemidji. We had two linemen left at PKM to cover any outages we may have had. It looked like PKM was going to be hit by two large storms on Sunday morning of June 22. Our last two linemen handled just a few line outages after the first wave, and thankfully the second wave dissipated. One of the best things about being a cooperative is cooperation among cooperatives. Without help from all our neighboring cooperatives, restoration after storms like this would take weeks instead of days. I want to thank our linemen for all the work they have done and the time they've spent away from family. They spent a couple days with Red River and many days with Beltrami helping restore power from the June 20 storm. I heard nothing but praise from the other cooperatives about working with our linemen. This tells you what a great group of employees we have and

how well they work together and with others. Thanks again for everything you do.

PKM's new rates have been on our bills the last two months, and we've only received a few calls so far on this. If you have any questions, please give us a call.

Line crews remain very busy. We've followed the Wikstrom fiber crews in areas where we can eliminate overhead highway crossings and river crossings. The river crossings are the best ones to eliminate because they seem to be the most dangerous outages to restore. We have some large services we have completed and a few more to do.

PKM just received a No Lost Time Accident Award from our insurance provider Federated Rural Electric Insurance. Your cooperative has had 524,160 hours of no lost time – our last lost-time incident was in 2011. As it says on the award, this is an outstanding achievement.

Harvest has started and I want to remind everyone if you get tangled in any power lines, do not get out of equipment unless it is on fire. Call 911 and warn others to stay away until crews arrive to verify it's safe.

Electrical Inspectors

Marshall County

Nick Boman
651-627-2696

Kittson County

Ronald Ditsch
218-779-6758

Polk County

Todd Knaack
763-516-0344

July/August 2025 (Vol. 79, No. 4)

The PKM News (USPS 417060) is published six times a year: February, April, June, August, October and December, by PKM Electric Cooperative, Inc., 406 N. Minnesota St., Warren, MN 56762. Periodicals postage paid at Warren, MN. Subscription 25¢/year for members, \$2.50/year for non-members. POSTMASTER: Send address changes to PKM Electric Cooperative, Inc., P.O. Box 108, Warren, MN 56762-0108.

Office hours

8 a.m. to 4:30 p.m., Monday through Friday
218-745-4711 or 800-552-7366

Electrical after-hours emergencies

800-552-7366
e-mail: info@pkmcoop.com
website: www.pkmcoop.com

Next board meeting

Board meeting to be held the last
Tuesday of the month.

Officers and Directors

President Mark Hatton
Vice President C.J. Peterson
Secretary-Treasurer Wayne Malm
Directors Paul Aakre, Jerred Copp, Steve Goodwin,
Chris Mortenson, Blake Owens, and Tom Woinarowicz
CEO Jeff Rustad
Editors Danny Schmidt, Megan Dagoberg

This institution is an equal opportunity provider and employer.

CONGRATULATIONS

CLASS OF 2025 PKM ELECTRIC COOPERATIVE SCHOLARSHIP RECIPIENTS

Each year, PKM Electric Cooperative provides scholarships for graduating seniors at each of the high schools operating throughout the cooperative's service area. These scholarships are made possible by funding from Operation Round Up®.

CONGRATULATIONS AND BEST WISHES TO THESE SCHOLARSHIP RECIPIENTS!



AUDREY BIENEK

Warren

Warren-Alvarado-Oslo



MCKINLEY FOLLAND

Halma

Kittson Central



NORA KUZNIA

Hallock

Kittson Central



RAEGON KUZNIA

Greenbush

Greenbush-Middle River



EASTON LARSON

Drayton

Drayton



MACEY NOVACEK

Warren

Warren-Alvarado-Oslo



AVA OBERG

Warren

Warren-Alvarado-Oslo



NORA OSOWSKI

Oslo

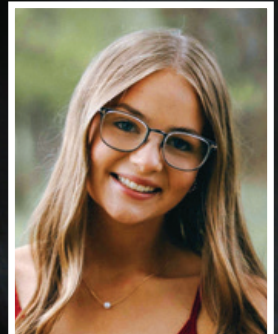
Stephen-Argyle



ADA PEARSON

Strandquist

Tri-County



MIRANDA PETERSON

Lancaster

Lancaster



KADEN PIERCE

Warren

Warren-Alvarado-Oslo



STRAET SPILDE

Halma

Tri-County



BERLYN STREGI

Lancaster

Lancaster



CHANDLER STROBLE

Angus

Warren-Alvarado-Oslo

HOWDY, NEIGHBOR!

Your electric co-op is local and
run by people in your community.

Did you know that the people who keep PKM Electric Cooperative running, including its employees and board of directors, are folks from your area? In fact, some of them may be your friends and neighbors! That's something that makes electric cooperatives different from investor-owned utilities (IOUs), whose bosses and board members are often hours away in big cities.



Your co-op is homegrown!

PKM is headquartered in Warren, Minnesota, and most of the people working here live in town or the surrounding communities. They care about keeping service reliable and affordable for members, because they're members, too.

The same can be said of our board of directors, whose members live in the different districts of our service territory. Each director is elected by fellow members who live in their district, so chances are high that you personally know your board representation!

All big decisions made by the staff of the co-op also go through the board of directors, who are there to voice the needs of your district. That's not possible with a board for an IOU, which speaks for shareholders instead of the electric consumers in their community.

In fact, board directors are elected every three years in each co-op district, so if you want to be a part of guiding your local co-op, you could run for a seat – if you meet the eligibility criteria, that is.

However you prefer to be involved with your cooperative, remember – your co-op is run with democratic member control, and your voice (and the voices of your friends and neighbors) is important!

Recognize anyone on this list? They're the neighbors on your board of directors!

- | | | |
|---------------------|-----------------|-------------------|
| ▶ Mark Hatton | ▶ Paul Aakre | ▶ Chris Mortenson |
| ▶ Clifford Peterson | ▶ Jerred Copp | ▶ Blake Owens |
| ▶ Wayne Malm | ▶ Steve Goodwin | ▶ Tom Woinarowicz |

AROUND THE COOPERATIVE

John Craik won the Warren Sheaf PKM coloring contest. The prize was a \$25 gift certificate to Dairy Queen.



PKM received a No Lost Time Accident Award from our insurance provider Federated Rural Electric Insurance. Your co-op has had 524,160 hours of no lost time – our last lost-time incident was in 2011, and this is a great achievement.



National Farm Safety and Health Week

September 22-27, 2025

Harvest can be very demanding for all the farmers and ranchers in the region. Your trusted electrical experts at PKM want to make sure every member comes home every night with all their fingers and toes. Here are a few helpful tips to stay safe this harvest season:



Always use proper Personal Protective Equipment (PPE)
Gloves, work boots, safety glasses

Keep an up-to-date first aid kit on hand

Large bandages, large shears, eye wash, medication for allergic reactions



Perform regular maintenance on your equipment

Provide proper equipment training for everyone working



Avoid wearing loose clothing around equipment

CONGRATULATIONS!

PAUL AAKRE EARNS BLC



PKM Board Director Paul Aakre recently earned his Director Board Leadership Certificate (BLC). BLC is an NRECA certificate program geared toward directors who are committed to continuing their co-op leadership education.



ELECTRIC CO-OPS ACTIVE AT MINNESOTA LEGISLATIVE SESSION

The 2025 Minnesota legislative session concluded on June 9 after a brief special session to finalize the state budget. Throughout the session, PKM Electric Cooperative advocated alongside other electric cooperatives in the state to ensure policies help retain reliable, affordable and sustainable energy.

Tragically, just days after lawmakers returned home, Minnesota was shaken by the senseless and violent deaths of Speaker Emerita Melissa Hortman and her husband, Mark, along with their rescue dog, Gilbert. Sen. John Hoffman and his wife, Yvette, were also injured in the same attack. Speaker Hortman was a respected leader and longtime collaborator with electric cooperatives, while Sen. Hoffman has been a bipartisan partner and steadfast supporter of rural electric co-ops. We mourn this terrible loss and extend our heartfelt condolences to their families and communities.

Even as Minnesota grapples with this tragedy, it's important to reflect on the work accomplished during the legislative session – especially on issues that matter to electric cooperatives and the communities they serve.

★ **PROTECTING RELIABILITY AND AFFORDABILITY** ★

Electric cooperatives worked to advance practical energy policy while defeating several proposals that would have imposed unnecessary costs on co-op member-owners. One of our top priorities was reforming Minnesota's outdated net metering law. Under current policy, electric cooperatives are required to pay above-market retail rates for excess rooftop solar energy, shifting costs to co-op members without solar panels. Although legislation to modernize this inequity didn't make it into the final budget, it gained strong momentum and we'll keep pushing in 2026.

Another key issue was lifting Minnesota's longstanding moratorium on new nuclear energy. Electric cooperatives co-founded the Minnesota Nuclear Energy Alliance, a coalition of nearly 40 stakeholders representing utilities, labor, business and environmental interests. Together, we advocated for access to next-generation nuclear power – a carbon-free, reliable solution to help meet the state's energy needs. While the moratorium remains, support is growing, and the conversation is moving forward.

★ **KEY LEGISLATIVE WINS** ★

- **Data centers:** As lawmakers addressed the rapid growth of large data centers, MREA played a key role in defeating a harmful provision that would have unfairly penalized co-ops and rural communities. The final bipartisan agreement includes reasonable efficiency standards and safeguards for co-op members.

- **Property tax fairness:** A major highlight of the session was the passage of a property tax clarification bill for electric cooperatives. This long-overdue fix ensures fair taxation of electric cooperative infrastructure and will save millions of dollars over time, while protecting rural investments and member-owner wallets.
- **No new mandates:** Electric cooperatives successfully opposed multiple proposals that would have added costly regulatory burdens, preserving the local control that defines our member-governed utilities.

★ **AS A CO-OP MEMBER, MAKE YOUR VOICE HEARD** ★

Much of this year's success was made possible through active participation from cooperative members, directors and local leaders. As preparations begin for the 2026 legislative session, electric cooperatives remain committed to advocating for policies that support a reliable, affordable and commonsense energy future for all members.

PROTECT THE LITTLES

Electrical Safety Checklist for Toddlers and Pets

Small children, puppies and cats are quite different, but all of them have something in common that could put them in danger's way - natural curiosity. Your home contains electrical hazards that are just a short crawl, bite or swipe away, so it's important to analyze your space and adjust to protect your beloved littles.

Here's a checklist to make sure you've thought of everything!

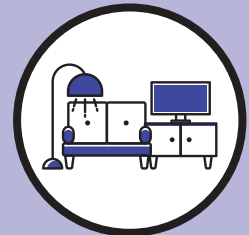
GENERAL HOME

- ✓ All outlets have safety plugs or sliding covers
- ✓ Power strips are child- and pet-safe or concealed
- ✓ Cords are out of reach and bundled securely
- ✓ Tamper-resistant outlets installed
- ✓ Electrical cords checked for wear/damage regularly
- ✓ Unused appliances are unplugged and stored



FAMILY ROOM

- ✓ TV and media consoles are anchored and cords hidden
- ✓ Lamps and chargers are out of reach
- ✓ No dangling cords from side tables or entertainment centers



KITCHEN

- ✓ Small appliances unplugged and stored when not in use
- ✓ Appliances kept away from edges of counters
- ✓ No accessible cords for toasters, kettles, etc.



BEDROOMS/NURSERY

- ✓ Baby monitors and chargers secured and cords hidden
- ✓ Night lights/sound machines/lamps out of reach
- ✓ No cords near cribs, beds or playpens



BATHROOM

- ✓ Hairdryers, razors, etc. unplugged and stored
- ✓ Outlets have GFCI (ground fault circuit interrupter) protection
- ✓ No devices left plugged in near water sources



PET-SPECIFIC TIPS

- ✓ No exposed cords in chewing reach of pets
- ✓ Use pet-proof cord protectors (especially for puppies/kittens)
- ✓ Don't leave heated pads or pet devices plugged in unattended
- ✓ Crates and beds placed away from outlets and plugs





**COLORING CONTEST
ENTRY DEADLINE:**

OCTOBER 31, 2025

3 prize winners will be selected.

**Each winner will receive a
\$50 Visa gift card.**

Name: _____

Age: _____

Account #: _____

City: _____

Phone #: _____

MAIL ENTRIES TO: PKM ELECTRIC COOPERATIVE, PO BOX 108 WARREN, MN 56762

COLD WEATHER RULE SHUTOFF PROTECTION

Please note that the Cold Weather Rule does not completely stop winter disconnects.

Minnesota's Cold Weather Rule (CWR) is a state law that protects residential utility customers from having electric or natural gas service shut off between Oct. 1 and April 30. PKM Electric Cooperative is prepared to work with members who are in need of assistance paying their electric bill. To protect your service from disconnection you must make and keep a payment plan that you and your utility agree on. The utility must offer a payment plan that is reasonable for your household's financial circumstances. You can set up a CWR payment plan any time during the CWR season.

You are eligible for CWR protection even if you rent – the electricity or gas must be the primary heat source and the utility account must be in your name.

You and your utility must agree to a payment plan that is reasonable for your household. You can set up a CWR payment plan any time during the CWR season.

All natural gas and electric utilities must offer CWR protection. CWR does not apply to delivered fuels; oil and propane or wood. If you use delivered fuels, and your furnace is run by electricity, you should apply for CWR protection with your electric company.

Call your natural gas, electric, municipal utility or electric cooperative for more information, or contact the Commission's Consumer Affairs Office by email at consumer.puc@state.mn.us or call **651-296-0406**, or **1-800-657-3782**.

If you need help paying your electric utility bill, you may qualify for state or federal fuel assistance. For complete qualification and application information, contact your local county welfare or community action council below.

LOCAL ENERGY ASSISTANCE PROVIDERS

Northwest Community Action

Badger, Minnesota

(Serves east Marshall County and Kittson County)

(218) 528-3258 or Toll Free (800) 568-5329

www.northwestcap.org

Tri-Valley Opportunity Council, Inc.

Crookston, Minnesota

(Serves west Marshall County and west Polk County)

(218) 281-9080 or Toll Free (866) 264-3729

5 STEPS FOR SAFE DIGGING

Working on an outdoor project?

Careless digging poses a threat to people, pipelines and underground facilities.

Always call 8-1-1 first!

Here are **5 steps** for safe digging:



1 Notify

Call 8-1-1 or submit a request online two to three days before you begin. The utilities affected by your digging will be notified of your project.

2 Wait

It may take two to three days for utilities to send a locator to mark any underground lines.



3 Confirm

Compare the marks on your yard to the list of utilities contacted by 8-1-1. Confirm that all entities have responded to the request.

4 Respect

Protect and follow the utility markers – the flags and/or paint will remain important guides throughout your project.



5 Dig Carefully

Be sure to avoid digging within two feet of the markers on all sides. If you can't, you'll need to consider moving your project.

Source: call811.com

Federal EV tax credit update

EV TAX CREDIT EXPIRES SEPT. 30, 2025

If you're considering purchasing a new electric vehicle (EV), you may want to make that decision sooner rather than later. Due to recent tax reform passed by Congress, a federal tax credit of up to \$7,500 will now only be available for EVs purchased before Sept. 30, 2025. The original credit expiration date was 2032, as set in the 2022 Inflation Reduction Act (IRA). Please consult a tax professional for additional details.

However, PKM Electric Cooperative's EV charging system rebate and low off-peak charging rate will remain in effect. It's a great way to save our members money and to help the co-op reduce its daily demand peaks. If you have questions about setting up an EV charging system in your garage, please give us a call at **218-745-4711**!



EV CHARGER REBATE

- \$50/kW (up to \$750)
- Must be on the off-peak program



OFF-PEAK CHARGING PROGRAM

- Charge during low-demand times, often overnight
- Pay a reduced rate, nearly half off the standard rate



ENERGY EFFICIENCY: TIP OF THE MONTH

Replace your cooling system's filter regularly to maintain strong airflow and boost energy efficiency. A clean filter means your system doesn't have to work as hard, saving energy and lowering your utility bills. Check the filter every month and replace it as needed.
— Source: energy.gov



HAPPY LABOR DAY

PKM Electric offices
will be closed **Monday,
Sept. 1**, in observance
of Labor Day.

In case of an outage,
call **1-888-847-8840**

PKM ELECTRIC COOPERATIVE POLITICAL LEADERS

Federal Legislators

President Donald Trump
The White House
1600 Pennsylvania Ave. NW
Washington, D.C. 20500
www.whitehouse.gov
202-456-1111

Senator Tina Smith
720 Hart Senate Office Building
Washington, DC 20510
Phone: 202-224-5641

Senator Amy Klobuchar
425 Dirksen Senate Building
Washington, D.C. 20510
www.klobuchar.senate.gov
202-224-3244
1-888-224-9043 (Minnesota office)
Fax: 202-228-2186

Congresswoman Michelle Fischbach
1237 Longworth House Office Building
Washington, D.C. 20515
www.fischbach.house.gov

202-225-2165
Fax: 202-225-1593

State of Minnesota Legislators

Governor Tim Walz
Capitol Building, Room 130
75 Rev. Dr. Martin
Luther King Jr. Blvd.
St. Paul, MN 55155
800-657-3717
www.mn.gov/governor

Senator Mark Johnson
95 University Avenue W.
Minnesota Senate Building,
Room 3111
St. Paul, MN 55155
651-296-5782
sen.mark.johnson@senate.mn
www.senate.mn/members

Representative John Burkel
309 State Office Building
St. Paul, MN 55155

651-296-9635
rep.john.burkel@house.mn

Representative Steve Gander
Centennial Office Building
(Second Floor)
St. Paul, MN 55155
651-296-5091
rep.steve.gander@house.mn

Board meeting highlights *May and June*

A special meeting of the board was held Tuesday, May 20, 2025.

Mark Hatton, president who presided, asked for roll call. Upon calling the roll, the secretary reported that all directors were present. Line Superintendent Joe Marcotte presented the monthly safety and operations report, indicating no accidents and no lost time. MREA will be here tomorrow to do our annual pole top and bucket rescue along with a mayday drill in the office. The linemen have been busy finishing up some of last year's projects. The frost is out now so it's GO time for plowing cable and the road restrictions are off as well. During spring planting, we have only had a couple poles get hit and a few neutrals get torn down.

The manager of member services shared activities within his department. He gave an update from Eaton on what they found happened to the meters. They have come back that it is bad factory saunters and a firmware update that corrupted some of the boards. Minnkota has had 127:17 dual heat control, 49:09 minutes of yellow zone and 8:35 minutes of red zone for the winter season. Minnkota is doing their seasonal injector voltage test on May 21-22 and full seasonal demand response full system test on May 26.

The CFO Karen Olson opened her report with an office update referencing her written report. Olson touched on the cost-of-service study and briefed on the audit findings. With the Cold Weather Rule expiring on April 30, we have resumed collections and disconnects for non-payment. Olson is working on a loan fund advanced; interest rates have gone up again, but we have not borrowed since July 2024. PKM has extended its work plan for another two years. Olson had her statewide meeting; the main topic was 2026 PFMLA law. Olson continued with the presentation of the Operating and Financial report for the cooperative. She reported April and May financials were lower than expected due to mild weather. PTD, we have a negative operating and non-operating margin and are over budget by \$20,643.13. Our equity is very high at 57.3%. Other financial data was presented and discussed along with the current tier ratio of 2.64.

The CEO referenced his submitted written report outlining the recent meetings. He shared an update on member right-of-way issue, and another issue which involved Legal & Federated Insurance. His highlights included his recent Carr's meeting at Stearns Electric in St. Joseph, electric plane charging infrastructure and IPP metering data collection. Upon presentation of the reports from the management staff and CEO, questions and comments from the board of directors concerning their reports were addressed. The CEO stated, according to the bylaws, the board of directors needs a separate resolution for the quarterly review of the financials. Having had the March financial review, a motion was made that the Board of Directors receive the first quarter financials.

At this point in the meeting, Matt Laughlin of Brady Martz and Associates presented the 2024 Audit Report to the board. Upon hearing a clean and unmodified opinion from the auditors, the president stated it would be necessary for the board to accept the 2024 Audit of the cooperative as presented.

At this point in the meeting, Benjamin Bratrud of Power System Engineering, Inc., presented the cost-of-service study with Minnkota Power Cooperative's new rate increase.

After Bratrud's presentation, with questions and discussion by directors, it was decided that with Minnkota's increase in rates the case was made necessary the need for an adjustment for retail rates. It was recommended that effective June 1, 2025, the wind energy surcharge of 0.4¢ per kilowatt hour be blended into the kilowatt-hour rate. In addition, the current residential kWh rate to be increased from 12.6¢ per kilowatt hour to 14.0¢ per kilowatt hour; the rate originally proposed was 14.6¢ per kilowatt hour. Additional changes to Policy bulletin 20-2.5 – Rate code 2 – Minnesota Department of Natural Resources Single-Phase Service Rate were made to include railroad and tile pump services and to Policy bulletin 20-7.8 – Rate code 7 – Three-Phase Commercial & Industrial Service Rate American Crystal Sugar to remove American Crystal Sugar and add C & I – IPP. The following changes below were recommended to the following rate policies: Policy bulletin 20-1.29 – Rate code 1 – General Farm and Rural Residential Single-Phase Service Rate; Policy

bulletin 20-2.5 – Rate code 2 – Minnesota Department of Natural Resources Single-Phase Service Rate; Policy bulletin 20-3.26 – Rate code 3 – Non-Demand Metered Three-Phase Service Rate; Policy bulletin 20-4.11 – Rate code 4 – Three-Phase Service Rate Large Power or Demand Metered; Policy bulletin 20-7.8 – Rate code 7 – Three-Phase Commercial & Industrial Service Rate American Crystal Sugar; Policy bulletin 20-8.8 – Rate code 8 – Three-Phase Commercial & Industrial American Crystal Sugar Beet Pilers; Policy bulletin 20-9.4 – Rate code 9 – Irrigation; Policy bulletin 20-51.5 – Outdoor lighting; Policy bulletin 20-52.8 – Load Management will need to be updated to reflect the below changes. Roll Call Vote is as follows:

C.J. Peterson – Yes Paul Aakre – Yes Wayne Malm – Yes
Blake Owens – Yes Steve Goodwin – Yes Jerred Copp – Yes
Chris Mortenson – Yes Tom Woinarowicz – Yes

The following changes were recommended for Policy Bulletin No. 23-1.1 – Collection Policy to increase the collection fee from \$50 to \$75 and increase the late payment fee based on the amount owed instead of a flat \$5 fee, the minimum charge will be \$5 or 1.5% charge on the amount owed. After the board's discussion, in addition to the late fee, they decided to increase the business hour reconnect fee from \$100 to \$300 and the after-hours reconnect fee from \$250 to \$600.

Financials were provided for Carr's Tree Service for February and March, along with information on all current co-op rates, GridEdge, NCSC Voting, CFC Voting, cooperative energy sales and solar information.

A regular meeting of the board was held Tuesday, June 24, 2025.

Mark Hatton, president who presided, asked for roll call. Upon calling the roll, the secretary reported that all directors were present. Line Superintendent Joe Marcotte presented the monthly safety and operations report, indicating no accidents and no lost time. Highlights from his report included MREA training on the digger. PKM has three summer help who started June 2. Marcotte shared the linemen have been busy keeping up with URD installation, replacing old URD cables and projects with Wiktell.

The manager of member services, Danny Schmidt, provided his report. Schmidt gave an update on metering issues with Eaton. At his manager's meeting Kristi Robinson presented on changes to the Nova Portal and issues that they have on a few inverters that are currently allowed to be installed on the secondary side of the meter. These inverters will hold 70 volts for five seconds before tripping; this is very dangerous for all linemen across the state. PKM will need to keep track of where these are installed on our system and shut the main disconnect down before doing any work on the line.

The CFO, Karen Olson, reported to the directors on recent activity within the office. After the rate increase was approved, we have been busy in the office working on getting things changed for the next bill run. We have been able to collect a large amount of past-due balances. Olson ended up doing a loan fund advance in June; we have cable and transformers that were ordered that total around \$2 million.

The CFO continued with the presentation of the Operating and Financial report for the cooperative. May revenue sales are up from 2024 by \$189,622.88 and expenses were under budget at \$441,046.34 year to date. Other financial data was presented and discussed along with the current tier ratio at 2.46 and equity at 55.8%.

The CEO, Jeff Rustad, shared highlights from the meetings attended this month. He shared an update on Carr's. Rustad also shared some projects that were not on the agenda for this year. Working with Federated Rural Electric Insurance on a possible claim against PKM. Upon presentation of the reports from the management staff and CEO, questions and comments from the board of directors concerning their reports were addressed.

At this time, the directors discussed policy bulletin 21-2.7 – Cogeneration & Distributed Energy. The recommended change was under V. Rates. The Plant Rating residential and small commercial rates need to be updated to reflect the information below.

I. RATES

Distributed Generation (DG) Fixed Charge

- In addition to the monthly Fixed Charge

- Name Plate Rating:

0 - 3.5 kw \$0.00

- Name Plate Rating Residential:

3.6 - 39.9 KW ~~\$2.65/KW~~ \$4.90/KW ~~Cap \$31.00~~ \$46.00

- Name Plate Rating Small Commercial:

3.6 - 39.9 KW ~~\$5.01/KW~~ \$5.33/KW ~~Cap \$138.00~~ \$223.00

- Reevaluated only when rates change.

Director Woinarowicz and Director Aakre gave their reports on Minnkota and Square Butte. The directors also had a discussion on the Governance Talk: What Directors Need to Know About the Line Extension video they watched.

The CEO asked the board of directors if they were interested in donating to the Cooperative Family Fund. The purpose of the Cooperative Family Fund is to provide support for children of electric cooperative employees when they experience the loss of a parent while actively employed at a cooperative. This support actively demonstrates the value our cooperative network places on cooperative families at the time of their greatest need. The board decided to contribute \$500.

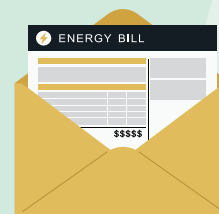
The CEO shared miscellaneous information with the directors including 2025 scholarship recipients, Minnkota's Renewable Energy Certificate Retirement report, Federated Rural notice of nomination and election and CoBank Nominating Committee, cooperative energy sales and solar information.

Financials were provided for Carr's Tree Service.

NEED HELP PAYING YOUR ELECTRIC BILL?

Energy assistance may be available!

If you are receiving a low income or suffering from a temporary financial shortfall, these agencies may be able to assist you with your electric bill. We urge you to contact them immediately to avoid disconnection if you feel you are eligible for aid.



NORTHWEST COMMUNITY ACTION

PO Box 67, Badger, MN 56714-0067
(218) 528-3258 or 800-568-5329
northwestcap.org

TRI-VALLEY OPPORTUNITY COUNCIL, INC.

1407 Erskine Street, Crookston, MN 56716
(218) 281-9080 or Toll Free (866) 264-3729



OCTOBER IS NATIONAL CO-OP MONTH!

Door Prize, Giveaways and Coloring Contest

Cupcakes, Cider and Coffee for Co-op Month

.....

CO-OP MONTH OPEN HOUSE – OCT. 8-10, 2025

(Enter for a chance to win a BIG prize!)

Stop in to the PKM office in Warren the week of Oct. 8-10 for treats and to register for our
DOOR PRIZE – a Blackstone electric griddle (door prize drawn on Monday, Oct. 13).

CO-OP MONTH KIDS COLORING CONTEST

To celebrate Co-op Month, have your child enter to win our coloring contest by **OCT. 31**.
See page 8 for the coloring sheet and more information.

REGISTER FOR PKM'S CO-OP MONTH GIVEAWAYS

Fill out and return this registration form for a chance to win one of our Co-op Month giveaways:

– \$250 energy credit – \$50 energy credit – \$100 energy credit

RETURN ENTRY BY OCT. 31, 2025. MAIL OR DROP OFF ENTRY BLANKS.

** Look for an additional registration form for the Co-op Month giveaway in your October billing statement.*

Name: _____ Phone #: _____

Address: _____

